

ATLAS

SINCE 1919



**ECONOMICAL.
FLEXIBLE.
STRONG.**

From 10 to 750 kNm



LOADING CRANES

WWW.ATLASGMBH.COM

ATLAS – CONSTRUCTION EQUIPMENT MANUFACTURER WITH TRADITION

From person to person

When Hinrich Weyhausen started selling construction and agricultural machinery in 1919 he discovered that the machines that his customers actually needed were not available. So he listened to them carefully and went about building the machines himself – exactly according to the requirements of the people who used his machines every day. He carried out pioneering work with a passion under the brand name of Atlas. His focus was always on the benefit of the machines. And nothing has changed for us in terms of this ideal today.




**Atlas makes you strong with
excellent products and a
comprehensive service.**



With highly motivated employees, a great deal of commitment and expertise, ATLAS GmbH develops successful cranes and excavators. Numerous customers, engineers and experts all around the globe have made their contribution. The result is robust equipment to enable you to work more effectively and safer than ever before.

As our know-how grew, so too did our dealer and service network worldwide. We can hence guarantee – in those days and today too – that we will always be on the spot when you need us.



Atlas manufactures a wide range of equipment for the construction, rail road, material handling and infrastructure industries. You will find more information about Atlas under www.atlasgmbh.com.

CONSTRUCTION



TRANSPORT



INFRASTRUCTURE



RECYCLING



CUSTOMER SATISFACTION STANDS FIRST!

WE ARE COMMITTED,

to providing our customers with products and services of the highest quality.

QUALITY STANDARDS AND CUSTOMER SATISFACTION

are measured in terms of service performance, reliability, relevance and timeliness.

OUR COMPANY PHILOSOPHY, OBJECTIVES AND PLANNING

are directed to sustainable process improvement as a basis for strengthening our competitive position and for improving product quality and service standards.

QUALITY STANDARDS AND CUSTOMER SATISFACTION

are measured in terms of product performance and reliability.

PRODUCT RANGE

SMALL CRANES

FROM 14 TO 73 KNM

**Lightweight construction.
Uncomplicated.
Sleek design.**

In use our smallest cranes are the greatest: low own weight, easy to use and quick to assemble. They have been specially constructed for small trucks.

- Landscaping
- Delivery
- Municipalities
- Checking wells
- Building materials
- Monitoring of the functionality



ATLAS 88.3 - ATLAS 240.2



- Landscaping
- Delivery
- Municipalities
- Material handling
- Building materials

MEDIUM CRANES

FROM 89 TO 240 KNM

**Flexible.
Compact.
Sensitive.**

Fitted with state-of-the-art technology and as reliable as a simple pulley - this is what distinguishes our cranes for trucks from 7.5 to 22 tons. Maximum precision achieved by greatest sensitivity. Equipped with LM+ technology for an output increased by up to 18%.

Atlas offers cranes with optimized technology and equipment.

LARGE CRANES

FROM 250 TO 620 KNM

Load.

Precision.

Reach.

Do you want maximum lifting capacity and reach? Welcome to the best productivity class, especially for trucks weighing more than 24 tons. Special features include a load sensing system (optional), twin slewing gear, continuous slewing gear and a wide range of fittings such as fly jib or winches. These cranes work faster than comparable cranes with the same lifting capacity.

ATLAS 250.2 V-T - ATLAS 870



- Building materials
- Container logistics
- Lifting logistics
- Installation work

V-BOOM CRANES

FROM 118 TO 196 KNM

**Cranes for building
materials**

For any need in the construction and building materials sector ATLAS designed a “crane made to measure”. Especially for this purpose, we offer our customers the top seat with an integrated control system. From this position, the operator has everything in full view. All tools required for these loader cranes can be easily handled and mounted. This is why they excel altogether by greatest flexibility in use.

ATLAS 105.2 V - ATLAS 210.2 VB



RECYCLING CRANES

FROM 40 TO 234 KNM

**Disconnecting.
Sorting.
Collecting.**

You want reliable, flexible and efficient system solutions?

With our recycling and timber handling cranes, we are well equipped to find smart and cost-effective solutions of your versatile tasks.

ATLAS 4L - ATLAS 25 ZR



MILITARY CRANES

In support of various military projects and applications throughout the world, Atlas designs and develops crane solutions for transportation, material handling and recovery for both wheeled and tracked vehicles. A complete range of truck cranes is available in different m/t ranges with various boom variations and reaches, whereupon reliability comes as standard based upon our many years of experience in projecting and manufacturing truck loading cranes for the commercial markets worldwide. Our cranes are suitable for all chassis types - cranes for repair and maintenance, material handling, bridging and recovery applications.



The right crane for any application and any truck: You can receive from us the complete line from 13 to 620 kNm. We will design your individual crane together with you. 55 basic models and 300 jib configurations, up to 22 meters of hydraulic outreach with 9 hydraulic extensions are available to help you.

EQUIPPED WITH THE BEST IDEAS

FOLDING CRANES: THE SPACE-SAVING MIRACLES

Folded up to save space, they are mounted between the truck cab and the superstructure, or at the rear of the truck, so as to leave enough space on the loading area, even for large goods.

V-CRANES: FASTER THAN ANY OTHERS

The special jib combination provides more efficiency: rotating movements are faster than linear ones.

T-CRANES: IT COULDN'T BE EASIER

For special applications and with the appropriate technology — this type of crane is a very uncomplicated work attachment.

(E)LMPLUS: DIRECTLY MORE CARRYING CAPABILITY

provides the loaded crane with a lot more capacity. Up to 18% more load moment possible.

E-SERIES: THE EXTRA CLASS

An Atlas milestone for crane works. The successful synthesis of technology, comfort, safety and an efficiently operating electronics system.



YOU ARE HERE ON THE SAFE SIDE

Load holding valves avoid crane boom dropping. They are fitted as standard on the lifting, knuckle and extension boom cylinders and optionally on the slewing gear. Valves are positioned in a manner that protects them from being damaged.

Movements are monitored by contactless sensors.

Signal lamps visualize the feedback from the operating states and the monitoring of the transport positions. In case of failure of the electrical system of the crane, mechanical operating elements ensure crane control. All cranes comply with the applicable regulatory provisions of the country of operation.



EXCELLENT TERMS OF SERVICE

Joint lubrication points for the column support and the slewing gear.

During routine checks direct view to the main components. For the purposes of the quick review by our customer service, there are measurement points placed at all operationally relevant positions.

Customer service employees of our dealers are highly trained in the technology in our factory in order to be qualified contacts for you at all times.

SPARE PARTS SERVICE

Absolutely unique: our spare parts service keeps stocks of spare parts over decades. Delivery is guaranteed for approx. 95% of deliveries.

And best of all: An express service for Europe:
order a spare part before 5 p.m.,
and get it the next day.



WHAT YOU SHOULD KNOW ABOUT QUALITY

CRANE BASE - SOLID BASIS: Crane base has been designed as a welded construction or a cast base. Low own weight.

HYDRAULICS – SAFE AND PRECISE: As standard: 4 main function that are expandable. The set-up functions - simple standard, up to 4x (optional). Large oil flow rate and high working pressure.

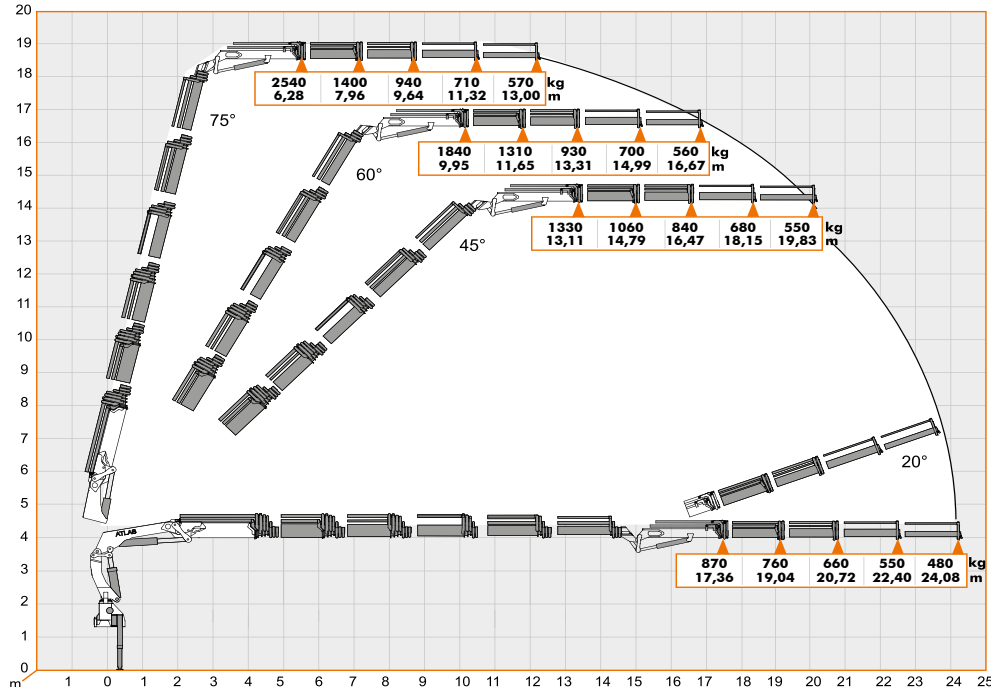
ELECTRICAL SYSTEM - EVERYTHING UNDER CONTROL: Controls are designed by applying advanced ergonomic principles. We pursue a consistent user concept, so that Atlas cranes are intuitively operable.

OPERATION/RADIO - COMFORTABLE WORK: Horizontally and vertically mounted standard controls. Seat at the column with controls in a linear / cross and pedal configuration and a platform. Radio or cable remote control.

ARM SYSTEM - ENORMOUS POWER DEVELOPMENT: Solid design of the lifting arm to ensure large lifting forces. Articulated jib with optimized hexagonal profile. Depending on the crane type and the number of the extensions, the extension cylinders are internally or externally located.

PROCESSING - FOR A GLOSSY APPEARANCE: Durability thanks to the special top coat — the best protection against corrosion.

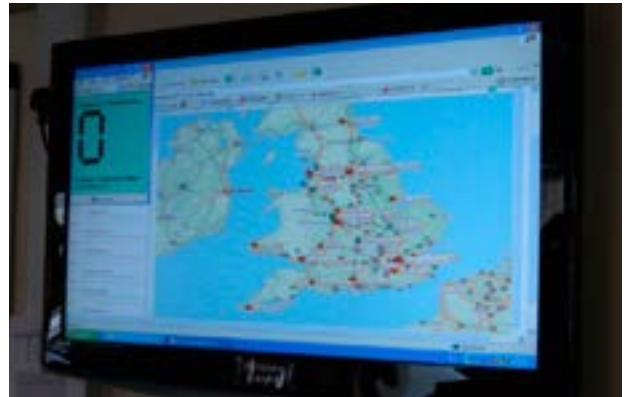
PERFECT PROFESSIONAL TOOLS: Load hook, grab tools and winches complement and optimize the cranes of Atlas for their appropriate use.



ONE CALL FOR ALL NEEDS OF OUR CUSTOMERS 08444 99 66 88

- CALL MONITORING
- INTERNET BASED SYSTEM
- CALL RECORDING
- 24 HOUR TELEPHONE SERVICES
- COMMITTED INSPECTORS
- OPTION FOR LEAVING A MESSAGE*

**Response time up to 30 minutes*



COMMITTED INSPECTORS FOR MALFUNCTION (RESPONSE TEAM)

- FOCUS ON MALFUNCTIONS - GETTING ENGINEERS TO SITE QUICKLY
- KEEPING THE CLIENTS UPDATED DURING THE PROCESS

COMMITTED CONTRACT INSPECTORS FOR THE CONTRACTS (PROACTIVE TEAM)

- MANAGE SERVICE DATES
- TRACK THE REPORTED WORK (ESTIMATED / COMPLETED)
- MAKE SURE LOLER REGULATIONS ARE ADHERED TO.
- KEEP CUSTOMERS INFORMED OF WEAR PATTERN.

CUSTOMER SERVICE – ENGINEERS TRAINING

- FACTORY TRAINED
- ONGOING TRAINING FOR NEW PRODUCTS
- FAMILIAR WITH THE LOLER REGULATIONS
- ALLMI OPERATOR — INTENSIVE TRAINED AND VERIFIED
- SUPPORT BY INSPECTORS THAT COMPLETED THE RELEVANT TRAINING
- 6 MONTH AUDIT OF ALL FIELD SERVICE TECHNICIAN



FULLY EQUIPPED

- ON BOARD GENERATOR SYSTEM
- LAPTOP COMPUTER FOR DIAGNOSTICS
- COMPREHENSIVE VAN STOCK
- TRACKING FACILITY
- SATELLITE NAVIGATION

SERVING THE ARMED FORCES FOR MORE THAN 40 YEARS

A PROVEN TRACK RECORD SINCE 1968

- MORE THAN 2500 CRANES AND EXCAVATORS SUPPLIED SINCE 1968
- DESIGN, PRODUCTION, EQUIPMENT, SERVICE AND SUPPORT DIRECTLY FROM ONE SOURCE
- PROFOUND KNOWLEDGE, ADVICE AND TECHNICAL EXPERTISE FROM A DEDICATED TEAM
- PRODUCT EXCELLENCE, PERFORMANCE AND RELIABILITY FROM THE INDUSTRY EXPERTS
- NATIONWIDE SERVICE AND SUPPORT NETWORK



GENERAL OVERHAUL AND REPAIR



From complete cranes to drive units, rams, valve blocks and other major hydraulic components, Atlas provides a comprehensive refurbishment services using skilled technicians based in the company workshops in Great Britain. As part of its total solution for the armed forces, Atlas is currently undertaking a number of refurbishment contracts.

The resource is designed to maximize the working hours and financial viability of all Atlas cranes supplied to this highly important sector.

TRUCK MOUNTED CRANES



THE REAR GUARD THAT SUPPORTS THE FRONT

The truck mounted loader contract is typical of the way in which Atlas works with the vehicle suppliers preferred by the British Ministry of Defence. This contract required the delivery of 104 cranes, which came into service in September 2009.

- Scope: 33x TML 240.2e A2 and 71x SLDT 105.2 A1L cranes
- Chassis: Iveco 6x6 Trakker
- Lifting capacity: up to 6 tonnes
- Controls: installed on the vehicle, plus remote control unit
- Expected life span: 17 years
- Possible usage:
 - Loading of pallets on to MGB trailers
 - Boats on to cradles
 - Lifting of concrete slabs
 - Disassembling of BR90 tank bridges for inspection and for construction and replacement of plates
 - ISO container handling

EKA Recovery – **SuperCompact**



In any organization, today availability and economic use of resources is critical.

EKA Limited was established to specifically focus in the area of military recovery equipment and has continued to concentrate in this specialized sector for over 30 years. EKA personnel have long-term experience working within the heavy truck and military recovery sectors and that knowledge, of both equipment and task, is integrated into the equipment EKA design and supply.

SuperCompact presents the third generation of the EKA recovery systems that are delivered to the UK Ministry of Defence, and is presented in this brochure as an attachment on the MAN SX45 8x8 military chassis.

EQUIPMENT OPTIONS



Our cranes are certified according to DIN EN ISO 9001 : 2008.



Brightly illuminated LED headlights for high visibility in the working area.

TOOLS

The appropriate tool for every task: classic pallet forks or a modern container discharging system - we will provide you with everything that you will need for optimal crane operation.



Brick Stack Grapple



Quickly mountable grab head piece.



Grab



Multi-jaw grab



Pallet Fork



Winch



Light ALU oil tank, hence more payload possible.



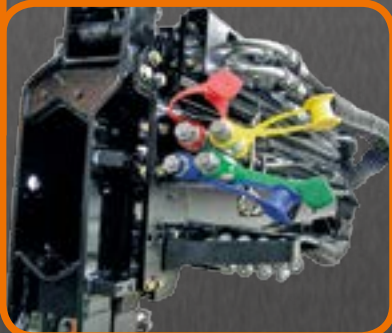
Easily visible indication of the LED operation status.



The automatic central lubrication system guarantees lubrication process in regular intervals. Optionally as a semi- or a complete system. Easy to maintain and time-saving.



The oil cooler with a thermal switch enables the long and continual work of the crane in case of extreme and hard tasks.



Quick-release couplings for quick tool changes.

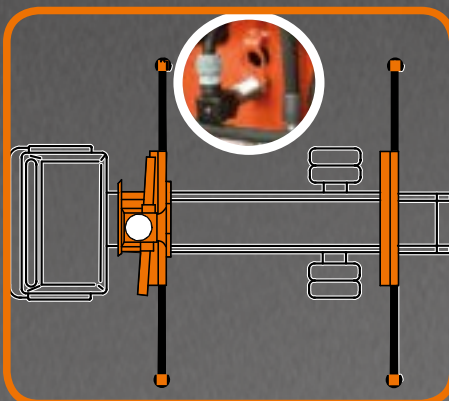


Easy operation of the safety hook for the lateral latching device of the outrigger support.

EQUIPMENT OPTIONS

MONITORING OF THE STABILIZING SUPPORT

(EAW) in accordance with EN 12999.



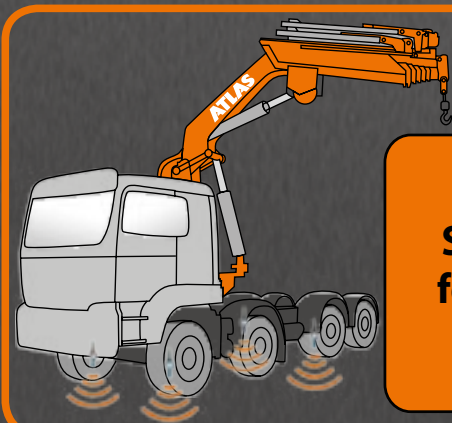
Electrical monitoring of the stabilizing support wide and the slewing range.



Internal hose routing, good protection for hoses.



Hose reel for good coils of hoses.



AHMEKO
STANDSICHERHEITSSYSTEM

**Stability control
for trucks cranes**

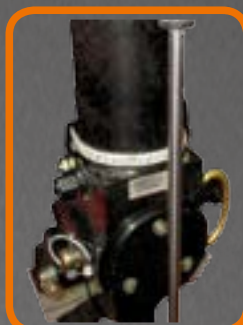


SUPPORTING LEGS

Atlas offers various design versions depending on the requirements for support in the relevant situation. Atlas typical square outriggers ensure the highest level of stability.



LED light strip on the supporting leg for increased safety.



Additional outriggers

Screw-on supporting leg.



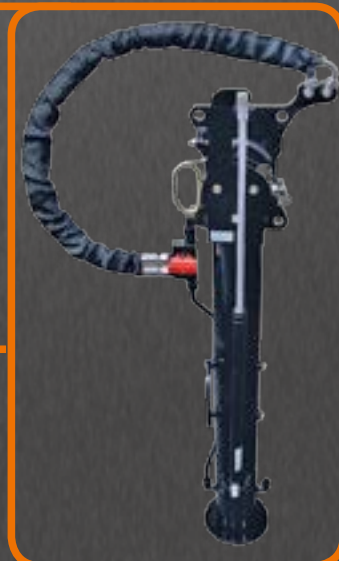
Screw-on supporting leg.



Support leg automatically slewed through rack and pinion.



Manual 180 ° slewing cylinder tube support. Slewing support for easy slewing by a gas spring.



CONTROL OPTIONS

Radio remote controls provide the operator with the highest level of security when controlling the loading. In order to guarantee precise, efficient and rational work, the operator can choose from a large number of designs and models.

HBC - RADIO REMOTE CONTROLS



Spectrum 2 - with 3 cross levers *

** Also available with lighting in the upper hoop guard*

ATLAS - RADIO REMOTE CONTROLS



ATLAS J3 – with 3 cross levers

ABITRON - RADIO REMOTE CONTROLS



Nova XL – with 3 cross levers

SCANRECO - RADIO REMOTE CONTROLS



with 3 cross levers



EL – HMS Hand lever control, optional

All kinds of wireless link control are also available with a linear lever and a display.
See Radio control brochure.

CONTROL OPTIONS FOR LM+ CRANES



The seat with a joystick, the foot switch and the hydraulic pilot control allow a non-tiring and accurate work. Heatable shell seat upon request.



The seat is equipped with joysticks and a foot switch for crane operators willing to work with a hand and a foot. Heatable shell seat upon request.

Universal platform that is suitable for various mounting positions and ensures high visibility in the working area.



Seat with linear control for the crane operator who wants to have all in a row. Heatable shell seat upon request.



Underfloor control of a standard design directly at the crane.

GANDERKESEE FACTORY

Atlas GmbH
Atlasstraße 6
D-27777 Ganderkesee,
Germany

Tel.: +49 (0) 4222 954 0
Fax: +49 (0) 4222 954 220
E-mail: info@atlasgmbh.com
www.atlasgmbh.com

**VECHTA FACTORY**

Atlas GmbH
Theodor-Heuss-Str. 3
D-49377 Vechta
Germany

T: +49 (0) 4441 954 0
F: +49 (0) 4441 954 299
E-mail: info@atlasgmbh.com
www.atlasgmbh.com

**DELMENHORST FACTORY**

Atlas GmbH
Stedinger Straße 324
D-27751 Delmenhorst
Germany

T: +49 (0) 4221 49 10
F: +49 (0) 4221 49 14 43
E-mail: info@atlasgmbh.com
www.atlasgmbh.com

**ATLAS CRANES UK LTD
NATIONAL SALES & SERVICE FACILITY**

Wharfedale Road,
Euroway Trading Est.
Bradford, England BD4 6SL
United Kingdom

T: +44 8444 99 66 88
F: +44 1274 65 37 85
E-mail: atlasuk@atlasgmbh.com
www.atlas-cranes.co.uk
www.atlasgmbh.com



ATLAS
CRANES & EXCAVATORS

WWW.ATLASGMBH.COM

Ref. no.: 6184668-02/18