

ATLAS SINCE 1919



LOADER CRANE AK 620.3E

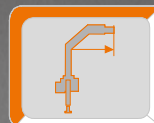


MADE
IN
GERMANY

**ECONOMICAL,
FLEXIBLE,
STRONG**



max: 27117 lbs



max: 72.2 ft



max: 5076 psi

WWW.ATLASGMBH.COM

EQUIPMENT OPTIONS



Our cranes are certified to
DIN EN ISO 9001 : 2008.

Easily visible LED operation
status indication.



Tools



Brick Stack Grapples



Cable winch



Orange Peel Grapple



Grabber



Pallet Fork



Brightly illuminated LED headlight for high visibility in the working area.



The oil cooler with a thermal switch enables the long and continual work of the crane in cases of extreme and hard tasks.



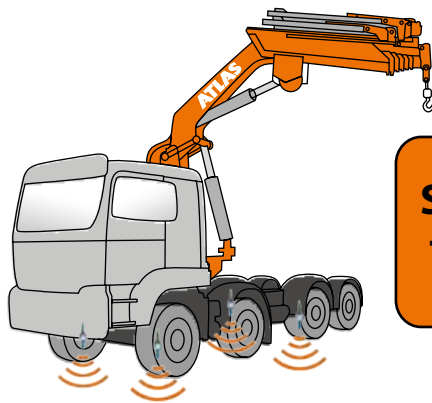
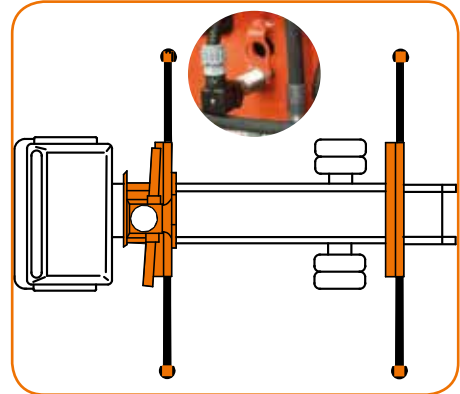
Easy operation of the safety hook for the lateral latching device of the outrigger support.

AVAILABLE & COST EFFECTIVE

Monitoring of the stabilizing support

(EAW) in accordance with EN 12999

Electr. monitoring of the stabilizing support wide and the slewing range

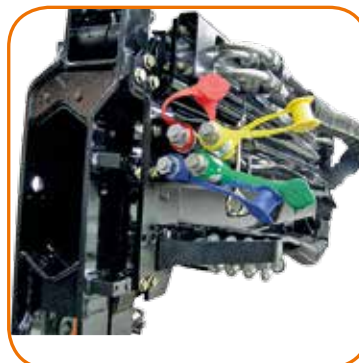


AHMEKO
STANDSICHERHEITSSYSTEM

Stability control for truck cranes



Hose reel for good coils of hoses



Quick-release couplings for quick tool changes

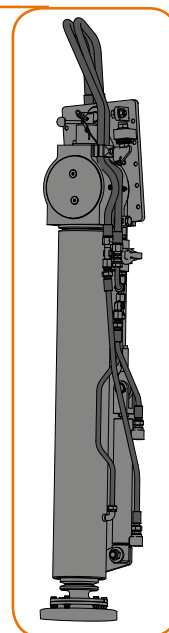


SUPPORTING LEGS

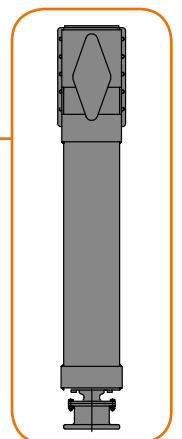
ATLAS proposes various design versions depending on the requirements for support in the relevant situation. The ATLAS typical square outriggers guarantee the highest level of stability.



Additional outriggers



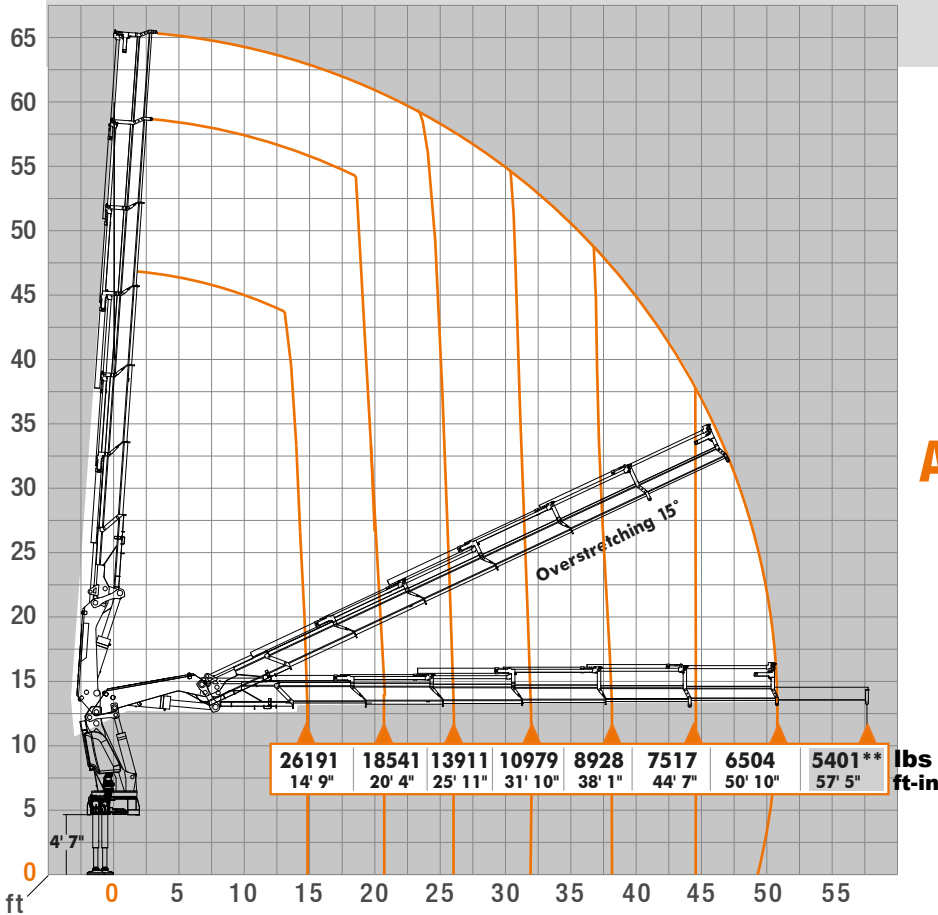
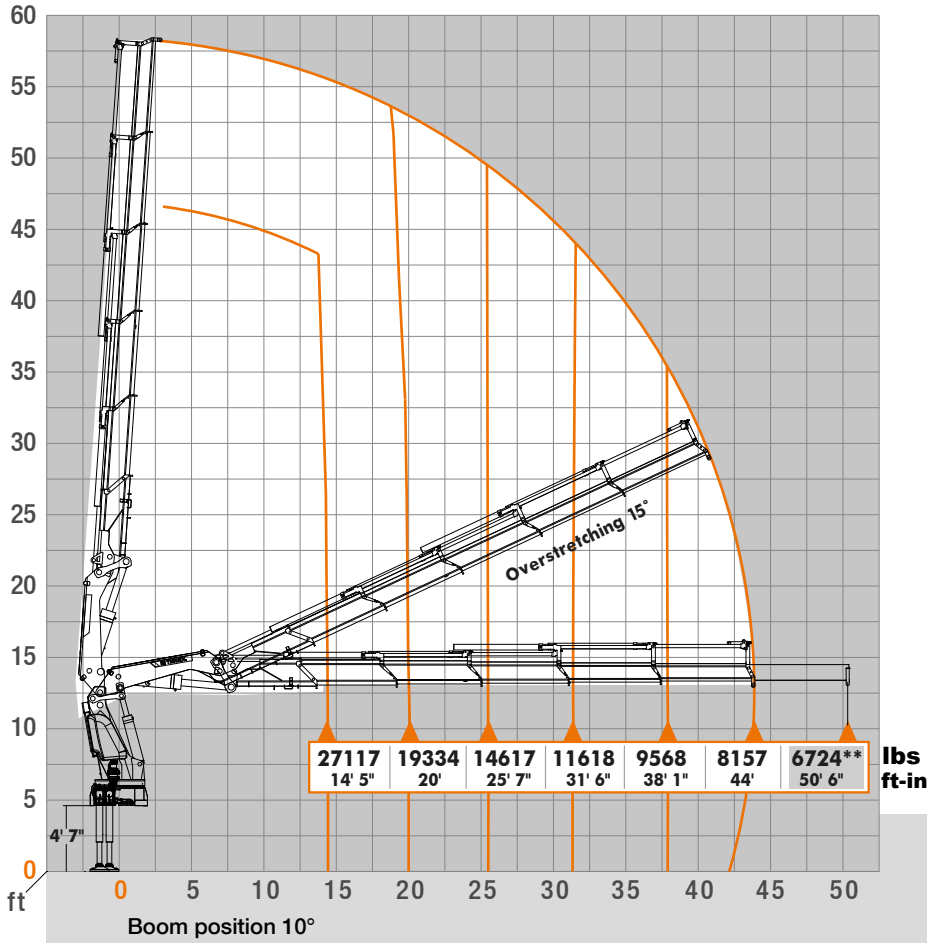
Screw-on supporting leg slewed



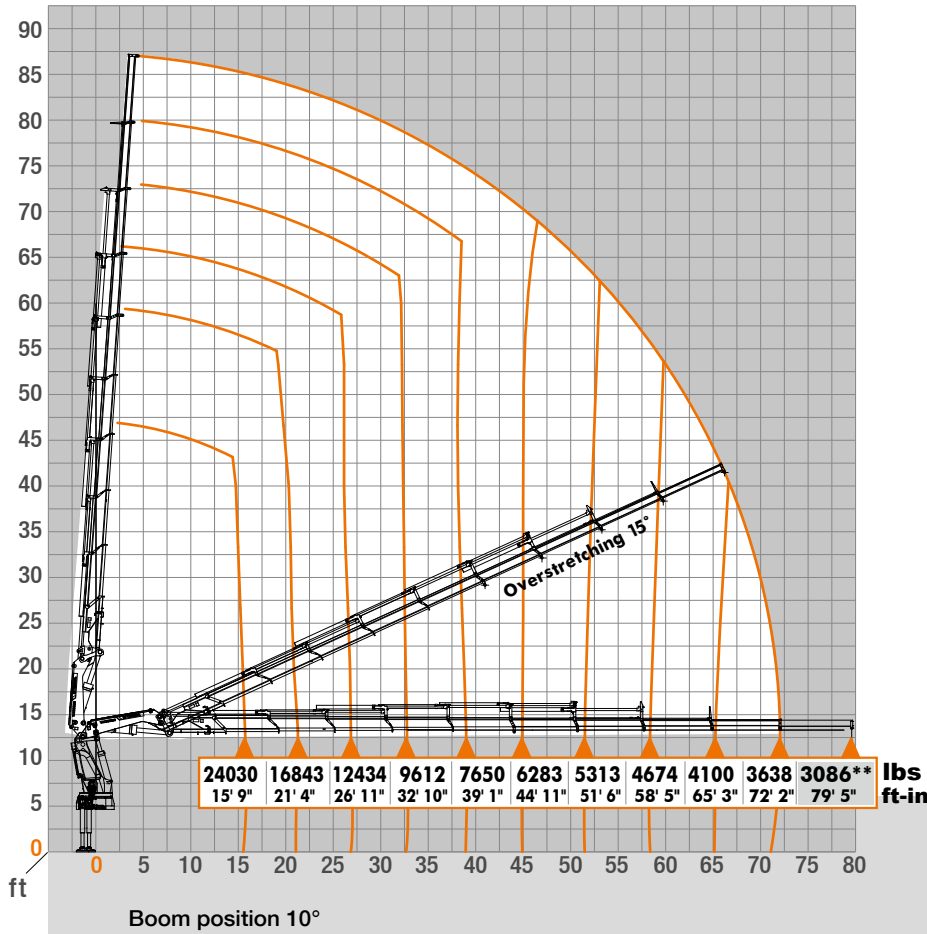
Screw-on supporting leg

AVAILABLE & COST EFFECTIVE

Load Diagrams



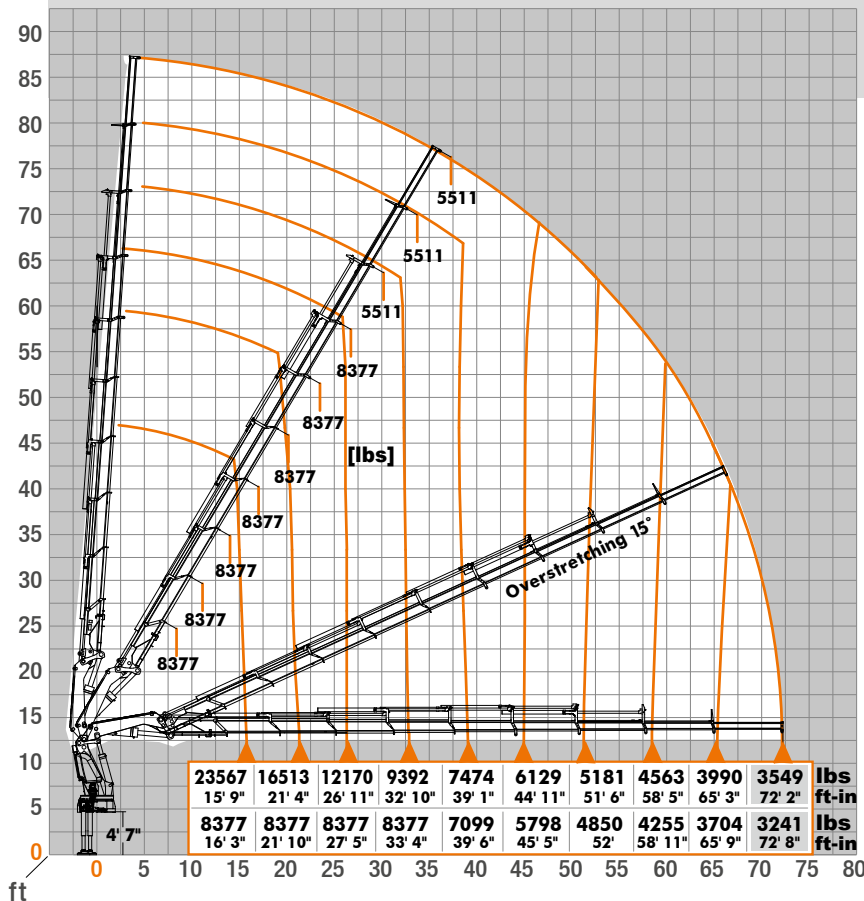
Load Diagrams



AK 620.3E A9-72' 2''/9/V109

Lifting capacity in "lbs"
Measurement in "ft-in"

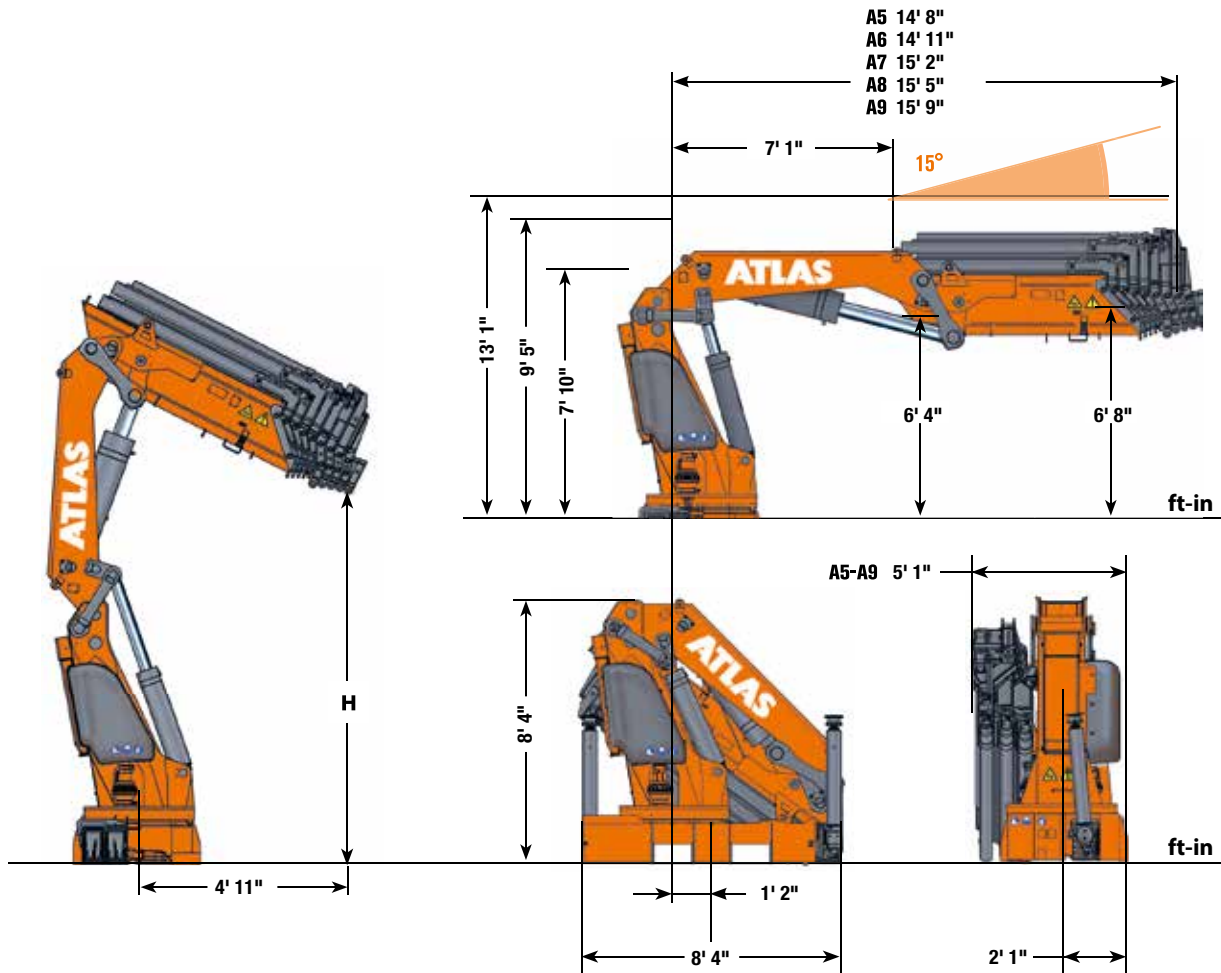
** - Optional manual extension



AK 620.3E A9 + W 38 Zx1 Mit seilwinde With rope winch

Lifting capacity in "lbs"
Measurement in "ft-in"

Dimensions



AK 620.3E HC1-HD4

	Weight *	H	Crane width	Operating pressure	Oil supply amount	Swivel range	Swivel moment	Lifting moment
Typ	lbs	ft/in	ft/in	psi	gal/min	ton ft	ton ft	ton ft
A 5	13558	11' 3"	8' 4"					195.9
A 6	14154	10' 11"	8' 4"					193.5
A 7	14705	10' 6"	8' 4"	5076	31.7	∞°	22.14	191.3
A 8	15079	10' 2"	8' 4"					189.7
A 9	15410	9' 10"	8' 4"					189.4



Simple basic unit for load hook work

* without stabilizer extensions and stabilizer legs

AVAILABLE & COST EFFECTIVE

Control options

Radio remote control provides the operator with the highest degree of security when controlling the loading crane. In order to guarantee precise, efficient and rational work, the operator can choose from a large number of designs and models.

HBC - Radio remote controls



Spectrum 2 – with 3 cross levers *

ABITRON - Radio remote controls



Nova XL – with 3 cross levers

* Optionally also with lighting in the upper hoop guard

ATLAS - Radio remote controls



ATLAS J3 – with 3 cross levers

All kinds of wireless link control are also available with a linear lever and a display. See Radio control brochure.

GANDERKESEE FACTORY

Atlas GmbH
Atlasstraße 6
D-27777 Ganderkesee,
Germany

Tel.: +49 (0) 4222 954 0
Fax: +49 (0) 4222 954 220
E-mail: info@atlasgmbh.com
www.atlasgmbh.com



VECHTA FACTORY

Atlas GmbH
Theodor-Heuss-Str. 3
D-49377 Vechta
Germany

T: +49 (0) 4441 954 0
F: +49 (0) 4441 954 299
E-mail: info@atlasgmbh.com
www.atlasgmbh.com



DELMENHORST FACTORY

Atlas GmbH
Stedinger Straße 324
D-27751 Delmenhorst
Germany

T: +49 (0) 4221 49 10
F: +49 (0) 4221 49 14 43
E-mail: info@atlasgmbh.com
www.atlasgmbh.com

ATLAS CRANES UK LTD NATIONAL SALES & SERVICE FACILITY

Wharfedale Road,
Euroway Trading Est.
Bradford, England BD4 6SL
United Kingdom

T: +44 8444 99 66 88
F: +44 1274 65 37 85
E-mail: atlasuk@atlasgmbh.com
www.atlas-cranes.co.uk
www.atlasgmbh.com

ATLAS SINCE 1919 AK 620.3E



www.atlasgmbh.com

ATLAS GmbH

CRANES

Atlasstraße 6

D-27777 Ganderkesee, Germany

T: +49 (0) 4222 954 0

F: +49 (0) 4222 954 220

info@atlasgmbh.com