

# ATLAS

SINCE 1919



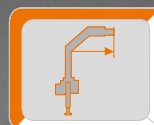
## LOADER CRANE AK 440.2V



**ECONOMICAL,  
FLEXIBLE,  
STRONG**



**max: 4255 lbs**



**max: 72.20 ft**



**max: 4351 psi**

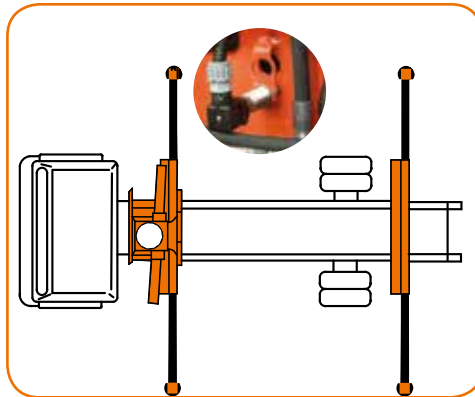
[WWW.ATLASGMBH.COM](http://WWW.ATLASGMBH.COM)

# EQUIPMENT OPTIONS



Our cranes are certified to DIN EN ISO 9001 : 2008.

## Monitoring of the stabilizing support



Electr. monitoring of the stabilizing support wide and the slewing range



(EAW) in accordance with EN 12999

## Tools

The appropriate tool for every task: classic pallet forks or a modern container discharging system — we will provide you with everything that you will need for the optimal crane operation.



### SUPPORTING LEGS

ATLAS proposes various design versions depending on the requirements for support in the relevant situation. The ATLAS typical square outriggers guarantee the highest level of stability.



Brick Stack Grapples



Grabber



Orange Peel Grapple



Pallet Fork



Easily visible LED operation status indication.



Brightly illuminated LED headlight for high visibility in the working area.



The oil cooler with a thermal switch enables the long and continual work of the crane in cases of extreme and hard tasks.



Additional outriggers with various support distances and support force for maximum stability. The additional outriggers of the cranes of our E-crane series can be controlled also via a wireless link.

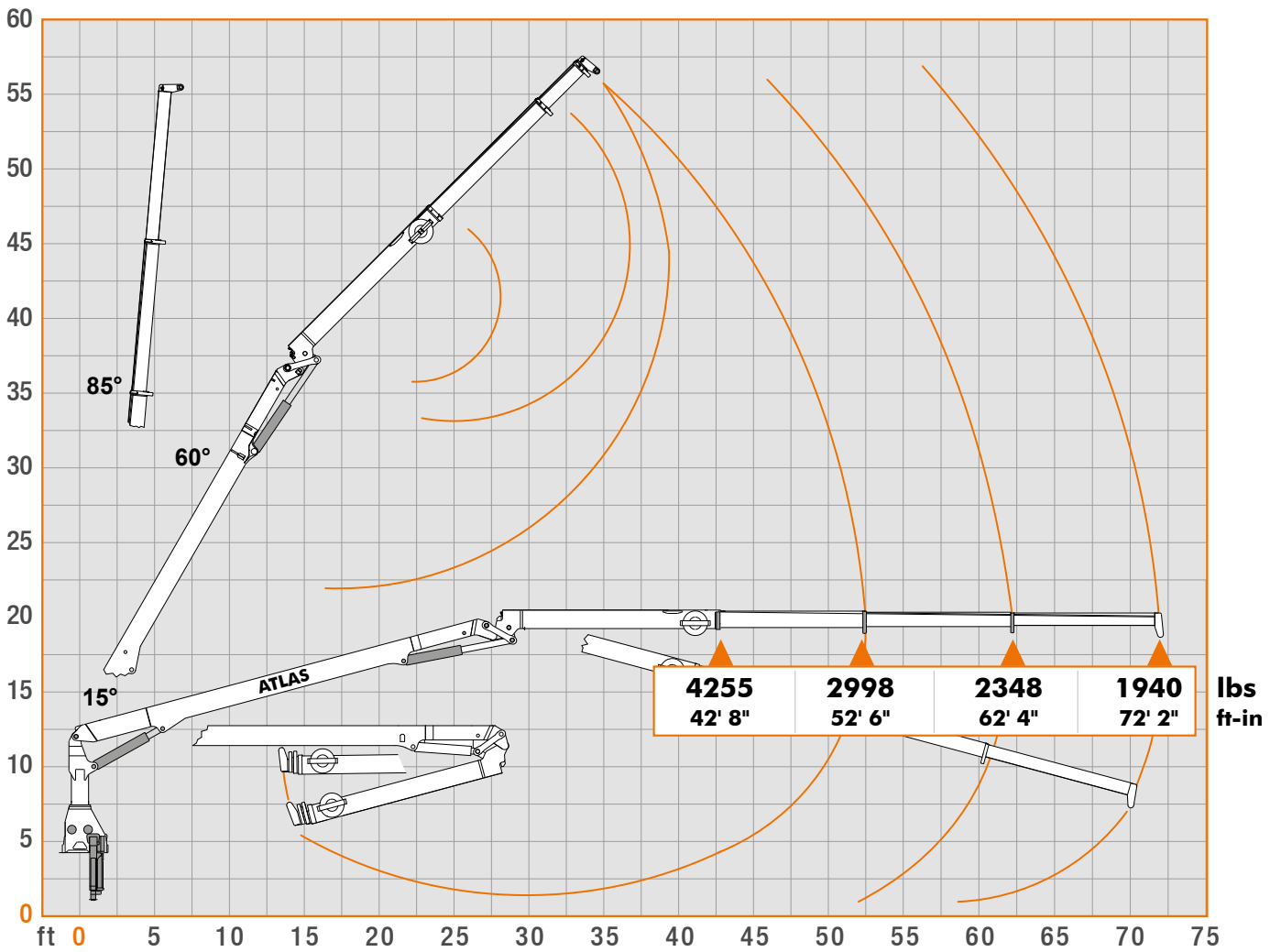


Oil Tank

**AVAILABLE & COST EFFECTIVE**

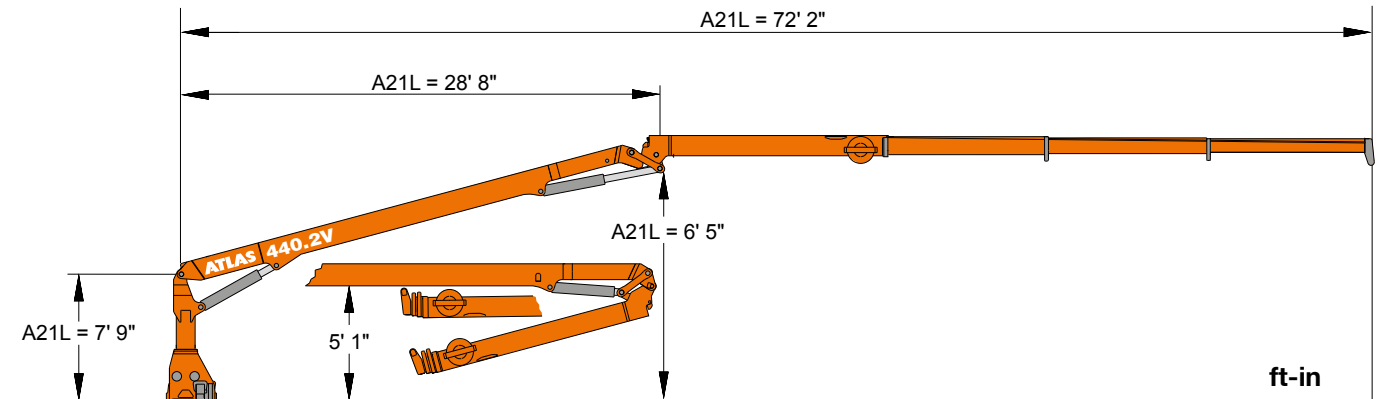
# Load Diagrams

## AK 440.2V A21L



Boom position 15°

# Dimensions



|             | AK 440.2V   | HC1/B3             |                   |              |               |                |
|-------------|-------------|--------------------|-------------------|--------------|---------------|----------------|
|             | Weight *    | Operating pressure | Oil supply amount | Swivel range | Swivel moment | Lifting moment |
| Typ         | lbs         | PSI                | US gal/min        |              | US tonf ft    | US tonf ft     |
| <b>A21L</b> | <b>9396</b> | <b>4351</b>        | <b>21.1</b>       | <b>410°</b>  | <b>12,29</b>  | <b>90,96</b>   |



Basic unit without support, small outrigger

\* without stabilizer extensions and stabilizer legs

# Control options

Radio remote control provides the operator with the highest degree of security when controlling the loading crane. In order to guarantee precise, efficient and rational work, the operator can choose from a large number of designs and models.

## HBC - Radio remote controls



Spectrum 2 – with 3 cross levers\*

## ABITRON - Radio remote controls



Nova XL – with 3 cross levers

\* Optionally also with lighting in the upper hoop guard

## ATLAS - Radio remote controls



ATLAS J3 – with 3 cross levers



Seat on the column with a holder for radio remote control. Heatable shell seat upon request.



Standard, 2 side control

All kinds of wireless link control are also available with a linear lever and a display. See Radio control brochure.

## GANDERKESEE FACTORY

Atlas GmbH  
Atlasstraße 6  
D-27777 Ganderkesee,  
Germany

Tel.: +49 (0) 4222 954 0  
Fax: +49 (0) 4222 954 220  
E-mail: [info@atlasgmbh.com](mailto:info@atlasgmbh.com)  
[www.atlasgmbh.com](http://www.atlasgmbh.com)



## VECHTA FACTORY

Atlas GmbH  
Theodor-Heuss-Str. 3  
D-49377 Vechta  
Germany

T: +49 (0) 4441 954 0  
F: +49 (0) 4441 954 299  
E-mail: [info@atlasgmbh.com](mailto:info@atlasgmbh.com)  
[www.atlasgmbh.com](http://www.atlasgmbh.com)



## DELMENHORST FACTORY

Atlas GmbH  
Stedinger Straße 324  
D-27751 Delmenhorst  
Germany

T: +49 (0) 4221 49 10  
F: +49 (0) 4221 49 14 43  
E-mail: [info@atlasgmbh.com](mailto:info@atlasgmbh.com)  
[www.atlasgmbh.com](http://www.atlasgmbh.com)

## ATLAS CRANES UK LTD NATIONAL SALES & SERVICE FACILITY

Wharfedale Road,  
Euroway Trading Est.  
Bradford, England BD4 6SL  
United Kingdom

T: +44 8444 99 66 88  
F: +44 1274 65 37 85  
E-mail: [atlasuk@atlasgmbh.com](mailto:atlasuk@atlasgmbh.com)  
[www.atlas-cranes.co.uk](http://www.atlas-cranes.co.uk)  
[www.atlasgmbh.com](http://www.atlasgmbh.com)

**ATLAS** SINCE 1919 AK 440.2V



[www.atlasgmbh.com](http://www.atlasgmbh.com)

**ATLAS GmbH**

CRANES

Atlasstraße 6

D-27777 Ganderkesee, Germany

T: +49 (0) 4222 954 0

F: +49 (0) 4222 954 220

[info@atlasgmbh.com](mailto:info@atlasgmbh.com)