

ATLAS SINCE 1919

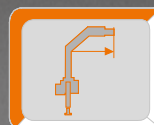
 **LOADER CRANE AK 300.2V/300VCS/330.2V**



**ECONOMICAL,
FLEXIBLE,
STRONG**



max: 17637 lbs



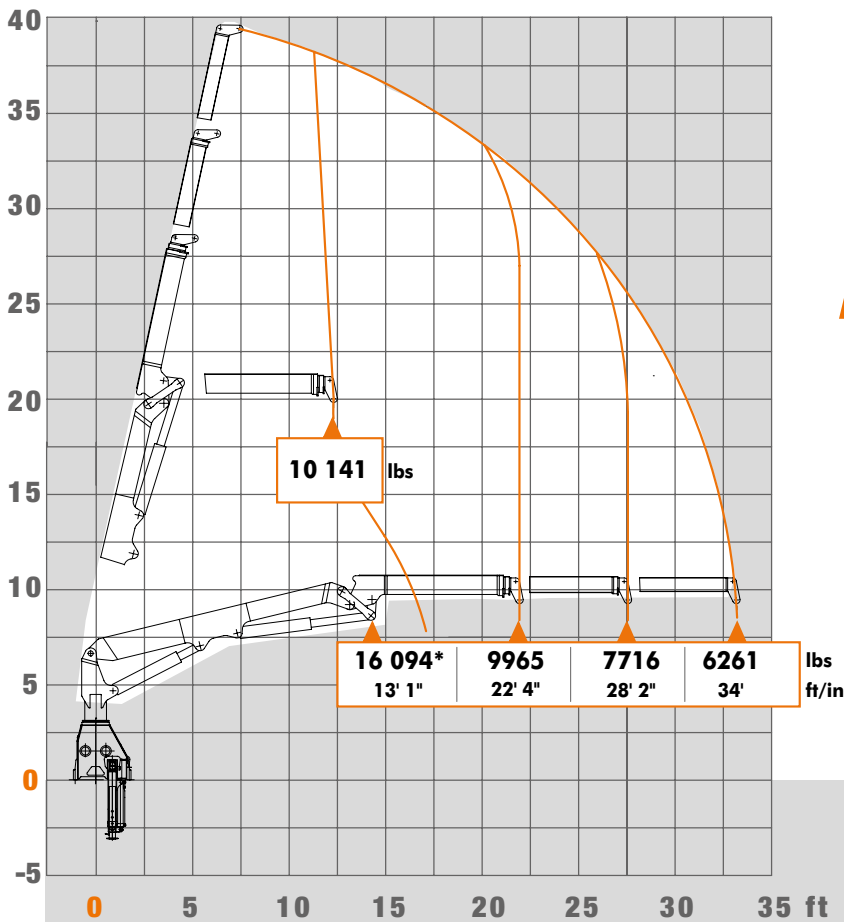
max: 67.22 ft



max: 4351 psi

WWW.ATLASGMBH.COM

LOAD DIAGRAMS

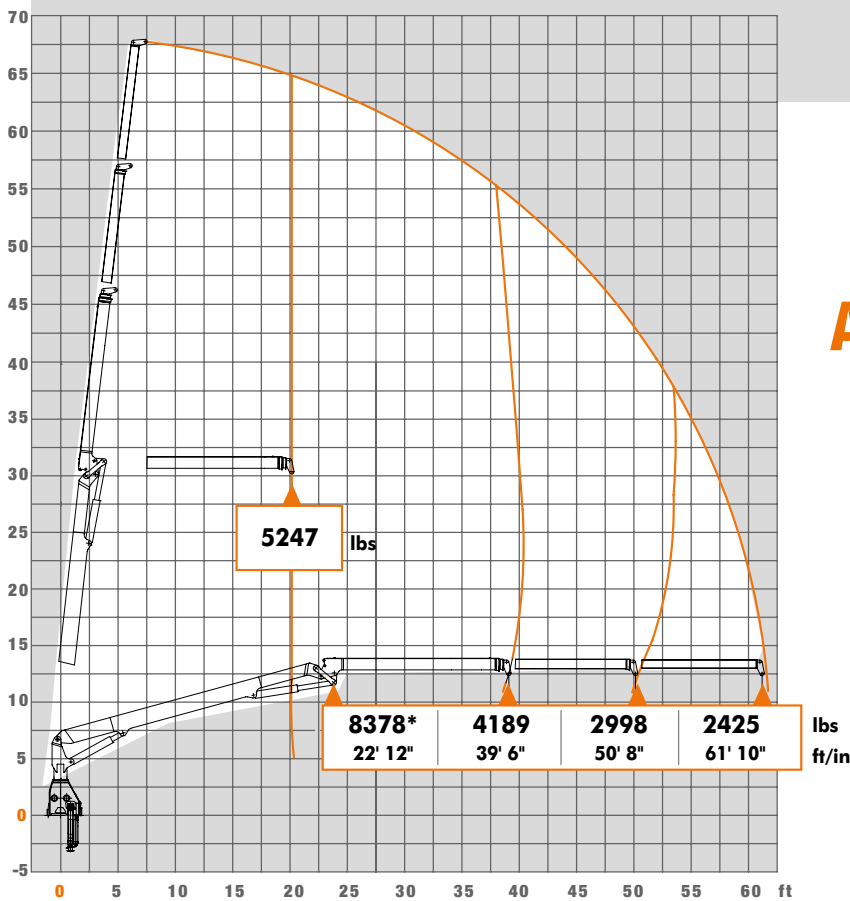


AK 300.2V/VCS A12-34' 1''/2

* { additional load hook point at jib

Boom position 15°

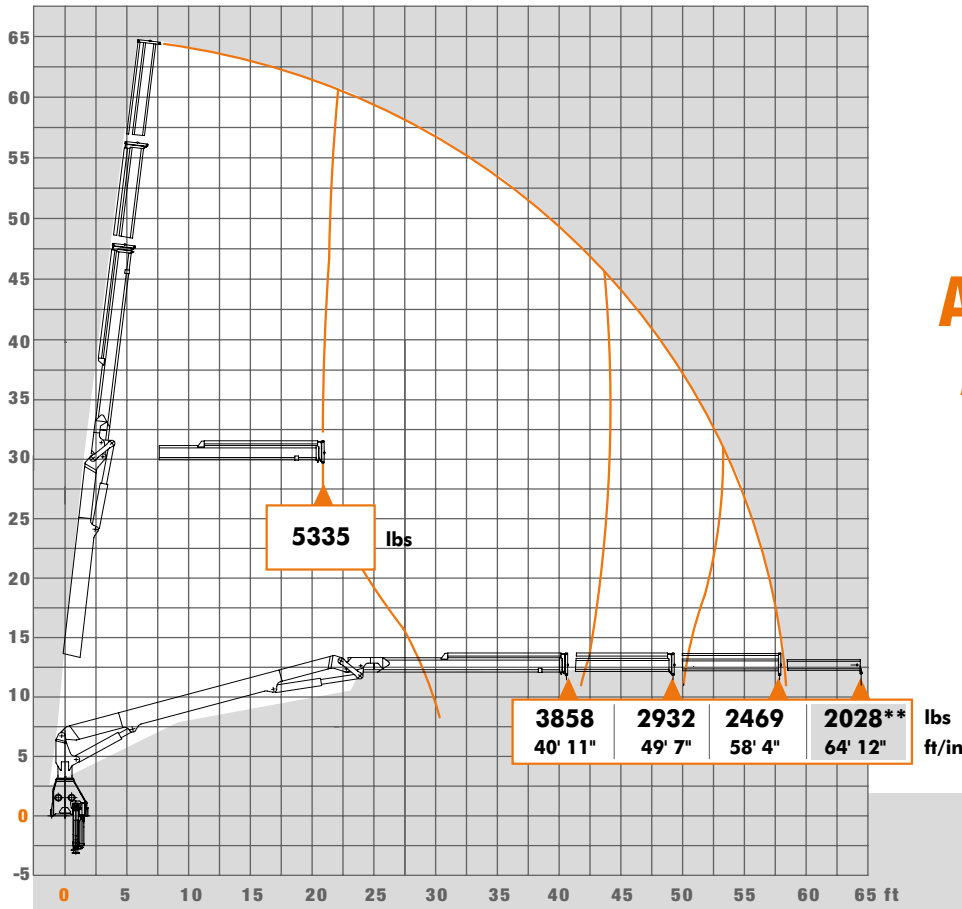
Lifting capacity in "lbs"
Measurement in "ft-in"



AK 300.2V/VCS A16S-62' 8''/2

AVAILABLE & COST EFFECTIVE

LOAD DIAGRAMS



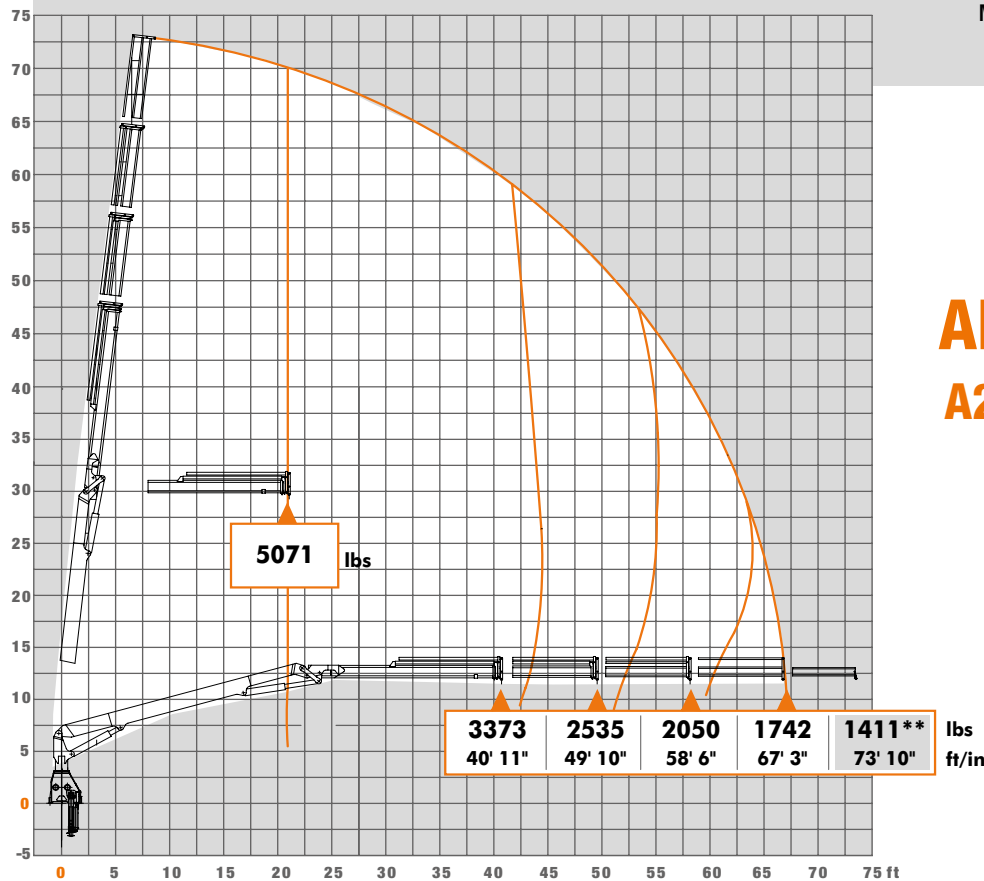
AK 300.2V/VCS A20-59' 1"/2/V102

** - Optional { Manual extension

Boom position 15°

Lifting capacity in "lbs"

Measurement in "ft-in"

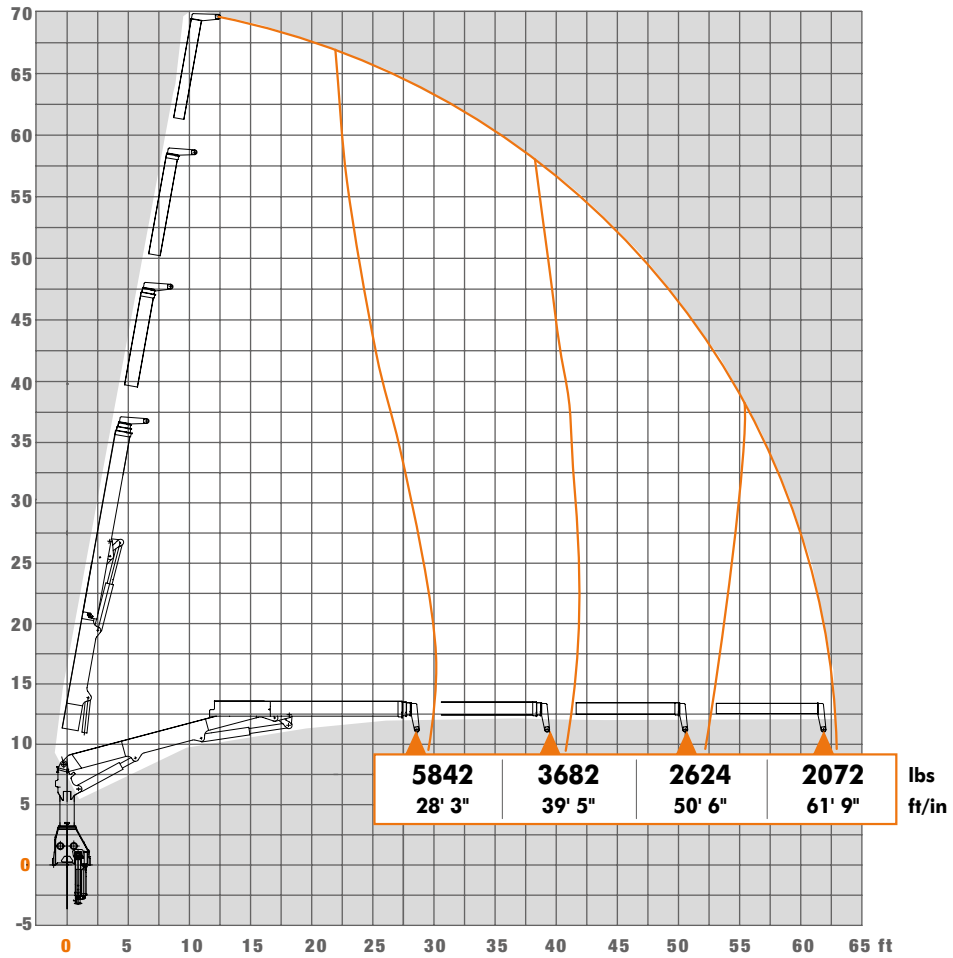


AK 300.2V/VCS A21-67' 11"/3/V103

AVAILABLE & COST EFFECTIVE

LOAD DIAGRAMS

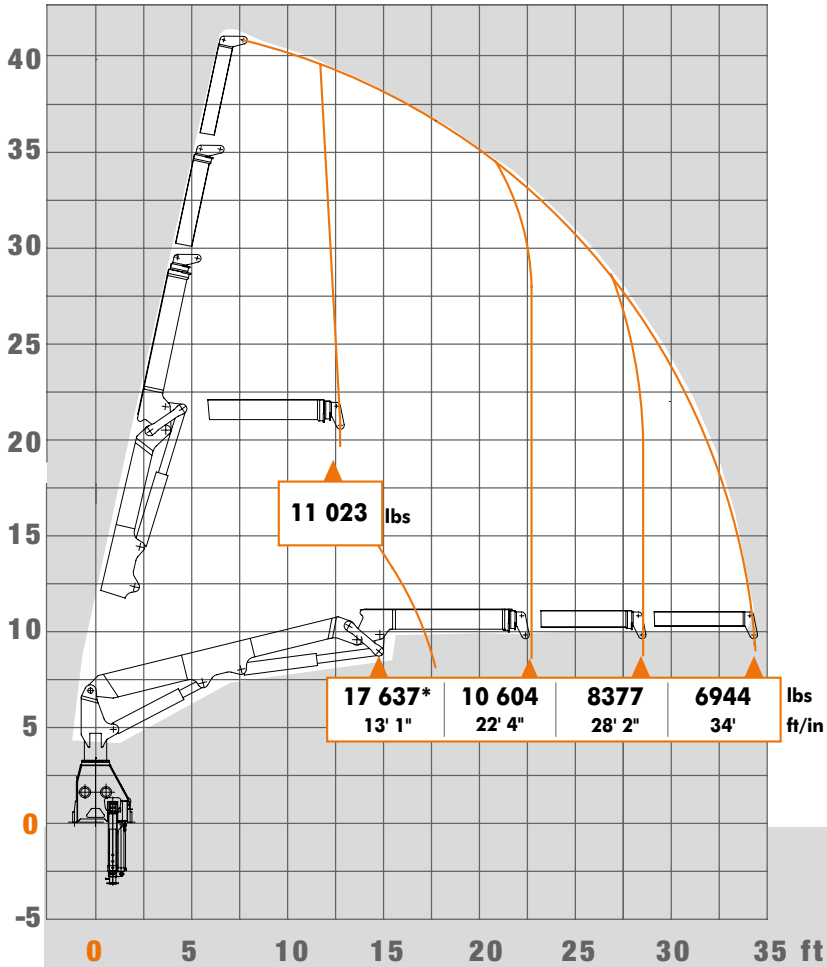
AK 300.2V/VCS A24-62' 4"/3



Boom position 15°

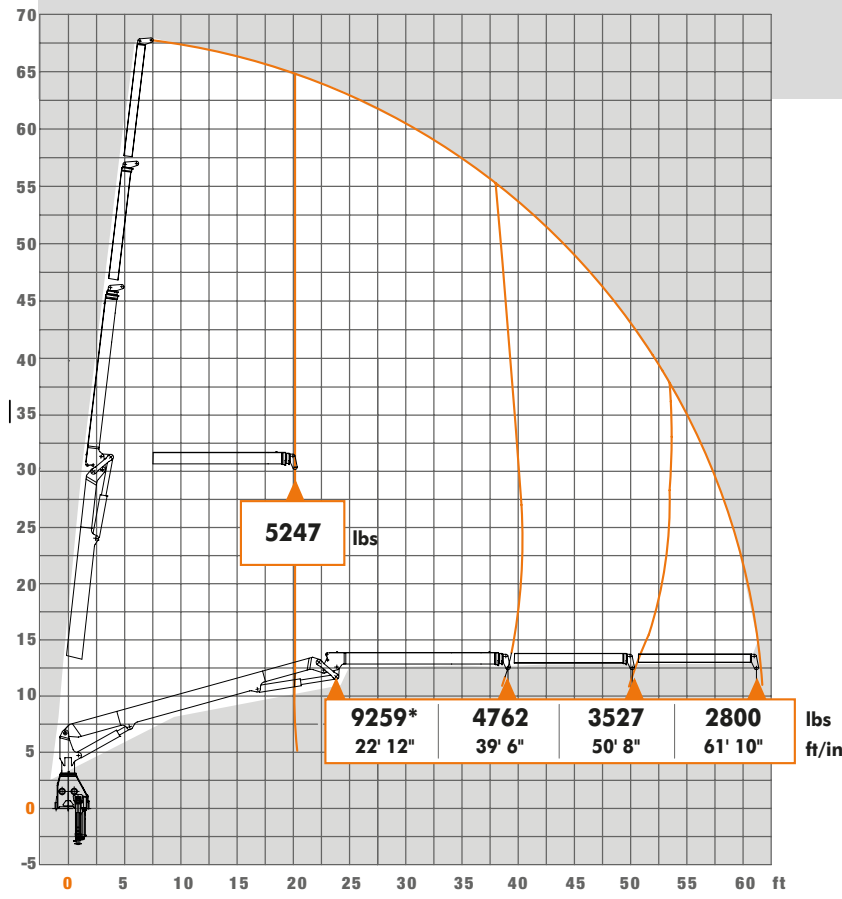
Lifting capacity in "lbs"
Measurement in "ft-in"

LOAD DIAGRAMS



AK 330.2V
A12-34' 1 1/2

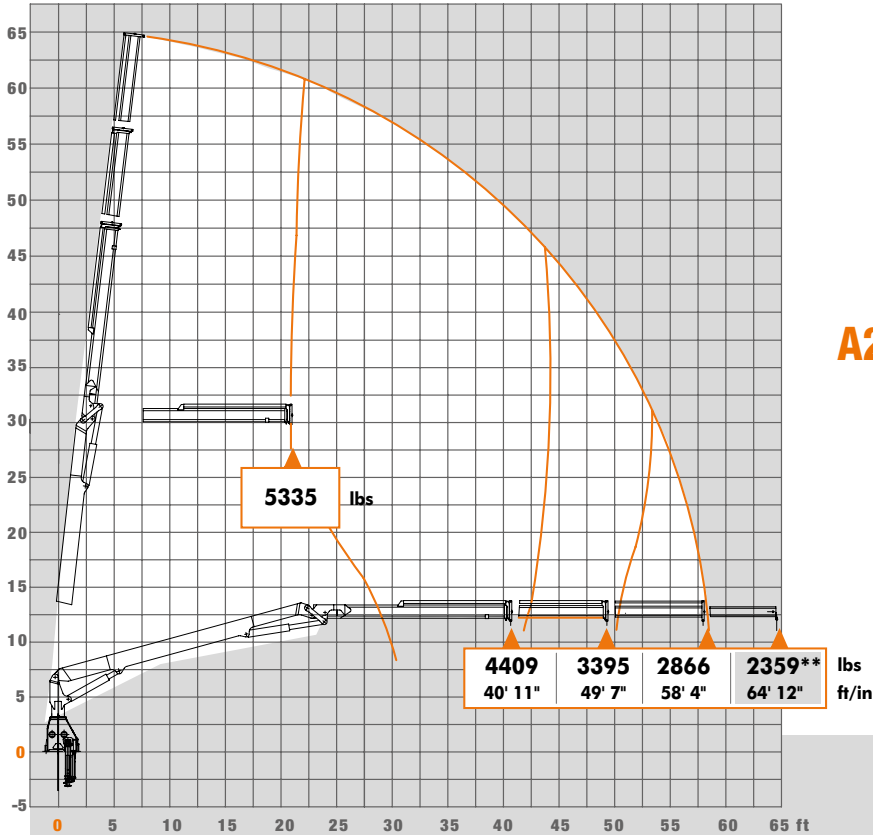
* { additional load hook point at jib
Boom position 15°
Lifting capacity in "lbs"
Measurement in "ft-in"



AK 330.2V
A16S-62' 8 1/2

AVAILABLE & COST EFFECTIVE

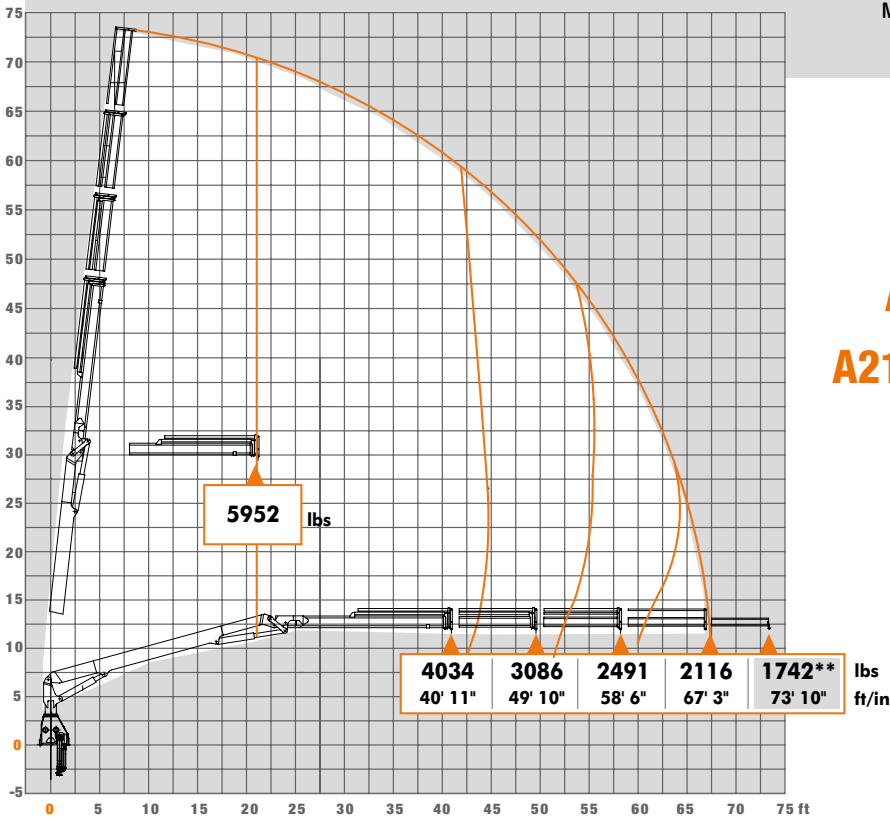
LOAD DIAGRAMS



AK 330.2V
A20-59' 1 1/2"/V102

** - Optional { Manual extension

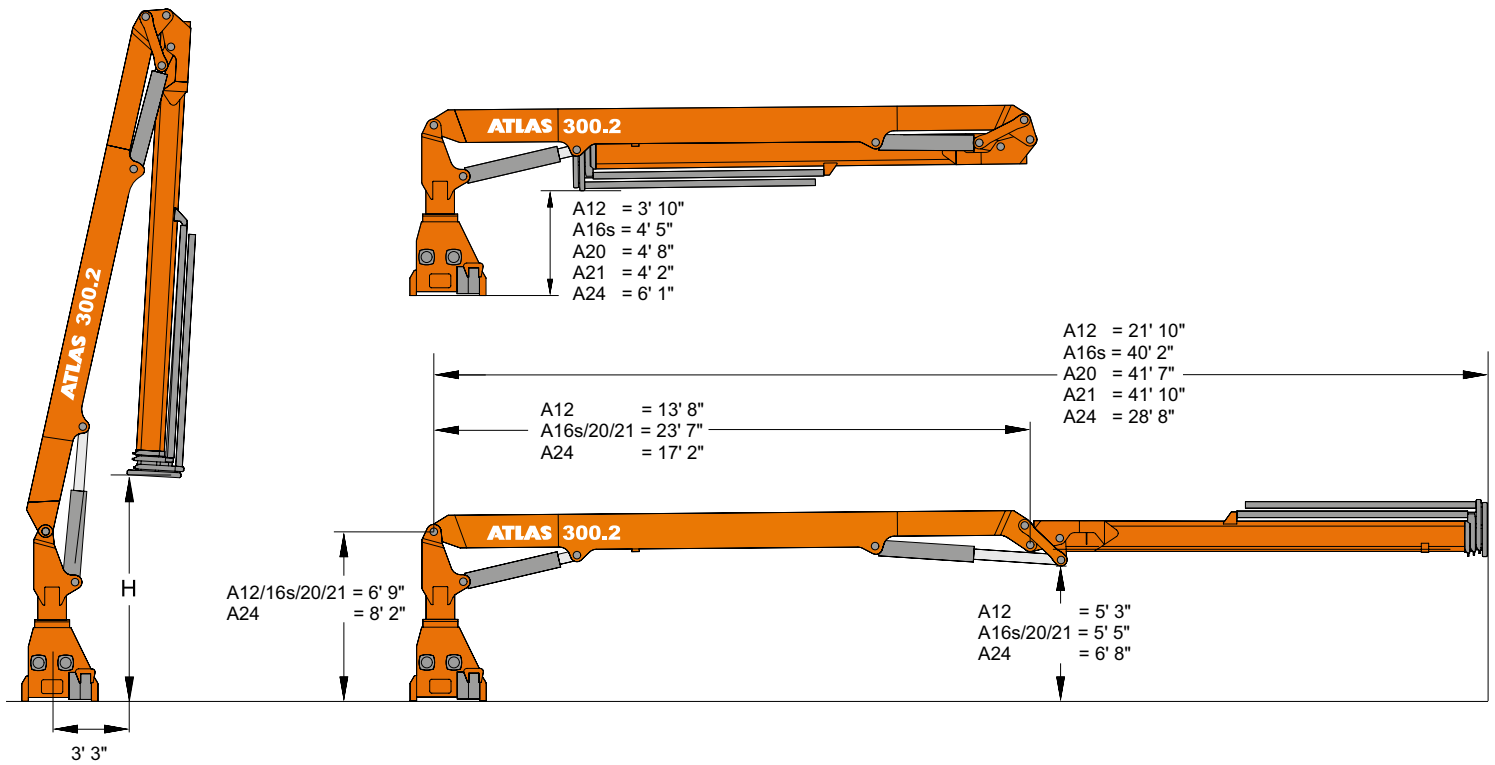
Boom position 15°
Lifting capacity in "lbs"
Measurement in "ft-in"



AK 330.2V
A21-67' 11 1/3"/V103

AVAILABLE & COST EFFECTIVE

DIMENSIONS



Simple basic unit for loadhook work

AK 300.2V/VCS/330.2V H1/B3

Typ	Weight without stabilizer extensions and stabilizer legs	H	Operating pressure	Oil supply amount	Swivel range	Swivel moment	Lifting moment	
	lbs	ft/in	psi	gal/min		tonf ft	300.2V/VCS tonf ft	330.2V tonf ft
A 12	6173	11' 2"	3916	15.9	410°	15.8	111.9	119.0
A 16S	6878	13' 11"	3916	15.9	410°	15.8	82.8	94.1
A 20	7231	12' 6"	3916	15.9	410°	15.8	79.0	90.2
A 21	7716	12' 3"	3916	15.9	410°	15.8	69.4	74.1
A 24	7253	13' 9"	3916	15.9	410°	15.8	82.5	-

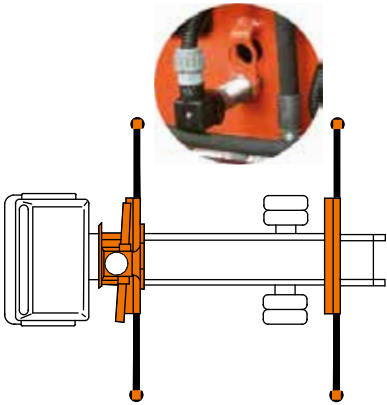
VCS - cranes

- = Simple and strong !
- = Reduces lift on pure !
- = DIN 15018 specifically for the non-European market !
- = No additional equipment available!
- = Low maintenance !

AVAILABLE & COST EFFECTIVE

EQUIPMENT OPTIONS

MONITORING OF THE STABILIZING SUPPORT 300.2V / 330.2V



(EAW) in accordance with EN 12999

Electr. monitoring of the stabilizing support wide and the slewing range.



TOOLS



Brick Stack Grapples



Pallet Fork



Grabber



EQUIPMENT OPTIONS



Additional outriggers

CONTROLS



Standard, 2 side controls 300.2V / 330.2V



300VCS Seat on the column



300VCS Controls

AVAILABLE & COST EFFECTIVE

CONTROL OPTIONS 300.2V / 330.2V

Radio remote control provides the operator with the highest degree of security when controlling the loading crane. In order to guarantee precise, efficient and rational work, the operator can choose from a large number of designs and models.

HBC - Radio remote controls



Spectrum 2 – with 3 cross levers*

ABITRON - Radio remote controls



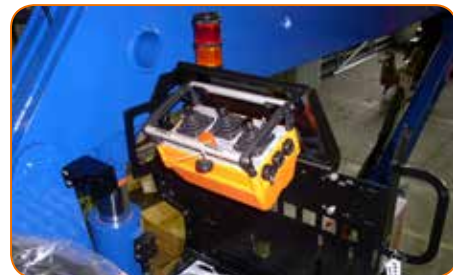
Nova XL – with 3 cross levers

* Optionally also with lighting in the upper hoop guard

ATLAS - Radio remote controls



ATLAS J3 – with 3 cross levers



Seat on the column with a holder for radio remote control. Heatable shell seat upon request.

All kinds of wireless link control are also available with a linear lever and a display. See Radio control brochure.

GANDERKESEE FACTORY

Atlas GmbH
Atlasstraße 6
D-27777 Ganderkesee,
Germany

Tel.: +49 (0) 4222 954 0
Fax: +49 (0) 4222 954 220
E-mail: info@atlasgmbh.com
www.atlasgmbh.com



VECHTA FACTORY

Atlas GmbH
Theodor-Heuss-Str. 3
D-49377 Vechta
Germany

T: +49 (0) 4441 954 0
F: +49 (0) 4441 954 299
E-mail: info@atlasgmbh.com
www.atlasgmbh.com



DELMENHORST FACTORY

Atlas GmbH
Stedinger Straße 324
D-27751 Delmenhorst
Germany

T: +49 (0) 4221 49 10
F: +49 (0) 4221 49 14 43
E-mail: info@atlasgmbh.com
www.atlasgmbh.com

ATLAS CRANES UK LTD NATIONAL SALES & SERVICE FACILITY

Wharfedale Road,
Euroway Trading Est.
Bradford, England BD4 6SL
United Kingdom

T: +44 8444 99 66 88
F: +44 1274 65 37 85
E-mail: atlasuk@atlasgmbh.com
www.atlas-cranes.co.uk
www.atlasgmbh.com



ATLAS
SINCE 1919

**AK 300.2V/300VCS
/330.2V**



www.atlasgmbh.com

ATLAS GmbH

CRANES

Atlasstraße 6

D-27777 Ganderkesee, Germany

Tel.: +49 (0) 4222 954 0

Fax: +49 (0) 4222 954 220

info@atlasgmbh.com