

ATLAS SINCE 1919



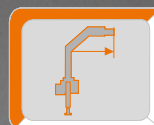
LOADER CRANE AK 250.2V/VCS/-T/TCS



**ECONOMICAL,
FLEXIBLE,
STRONG**



max: 12125 lbs



max: 64.5 ft



max: 3626 psi

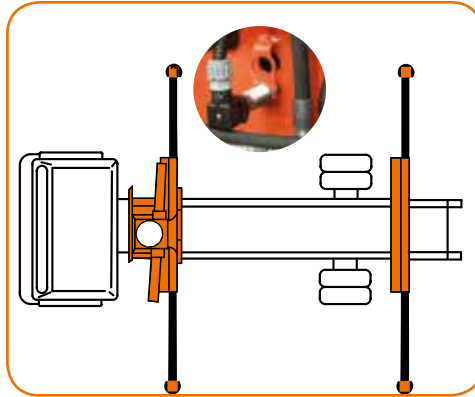
WWW.ATLASGMBH.COM

EQUIPMENT OPTIONS



Our cranes are certified to DIN EN ISO 9001 : 2008.

Monitoring of the stabilizing support



Electr. monitoring of the stabilizing support wide and the slewing range



(EAW) in accordance with EN 12999

Tools

The appropriate tool for every task: classic pallet forks or a modern container discharging system — we will provide you with everything that you will need for the optimal crane operation.



SUPPORTING LEGS

ATLAS proposes various design versions depending on the requirements for support in the relevant situation. The ATLAS typical square outriggers guarantee the highest level of stability.



Brick Stack Grapples



Grabber



Orange Peel Grapple



Pallet Fork



Easily visible LED operation status indication.



Brightly illuminated LED headlight for high visibility in the working area.



The oil cooler with a thermal switch enables the long and continual work of the crane in cases of extreme and hard tasks.

Additional outriggers with various support distances and support force for maximum stability. The additional outriggers of the cranes of our E-crane series can be controlled also via a wireless link.



Cable winch



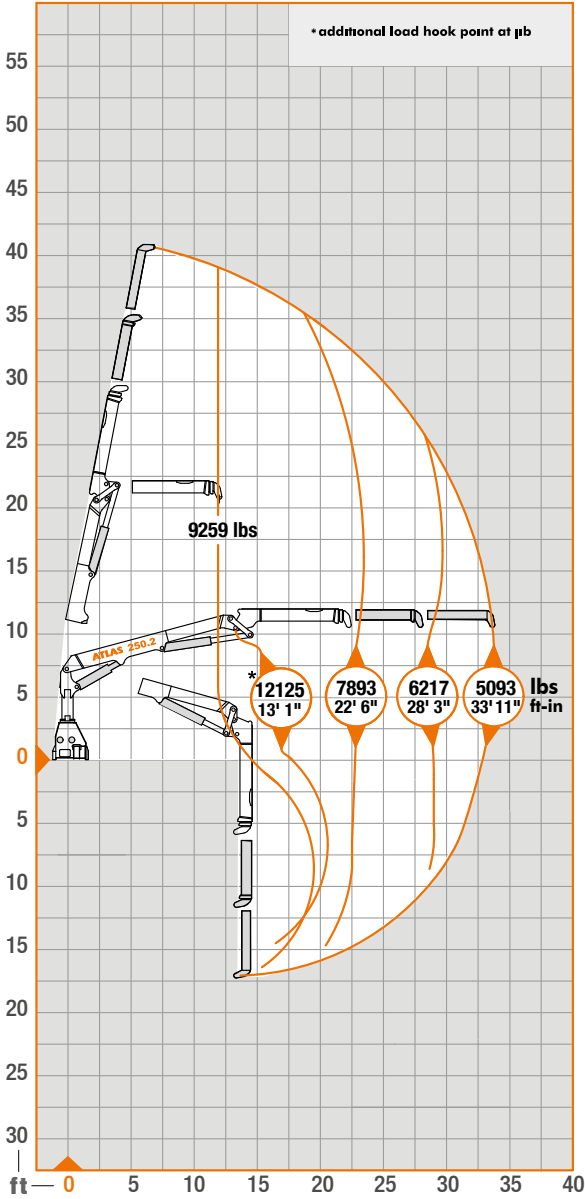
Oil Tank



AVAILABLE & COST EFFECTIVE

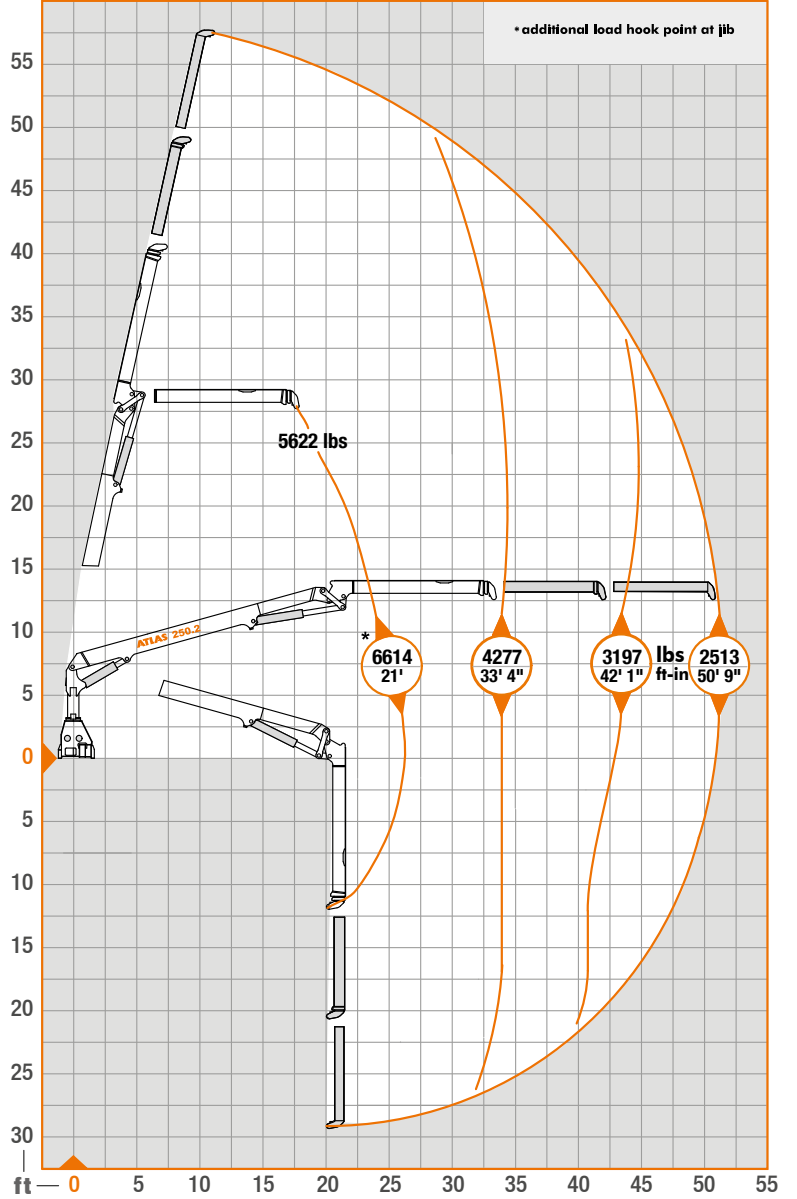
Load Diagrams

AK 250.2V/CS A12



Boom position 15°

AK 250.2V/CS A16



Lifting capacity in "lbs"
Measurement in "ft-in"

AK 250.2V/CS A12

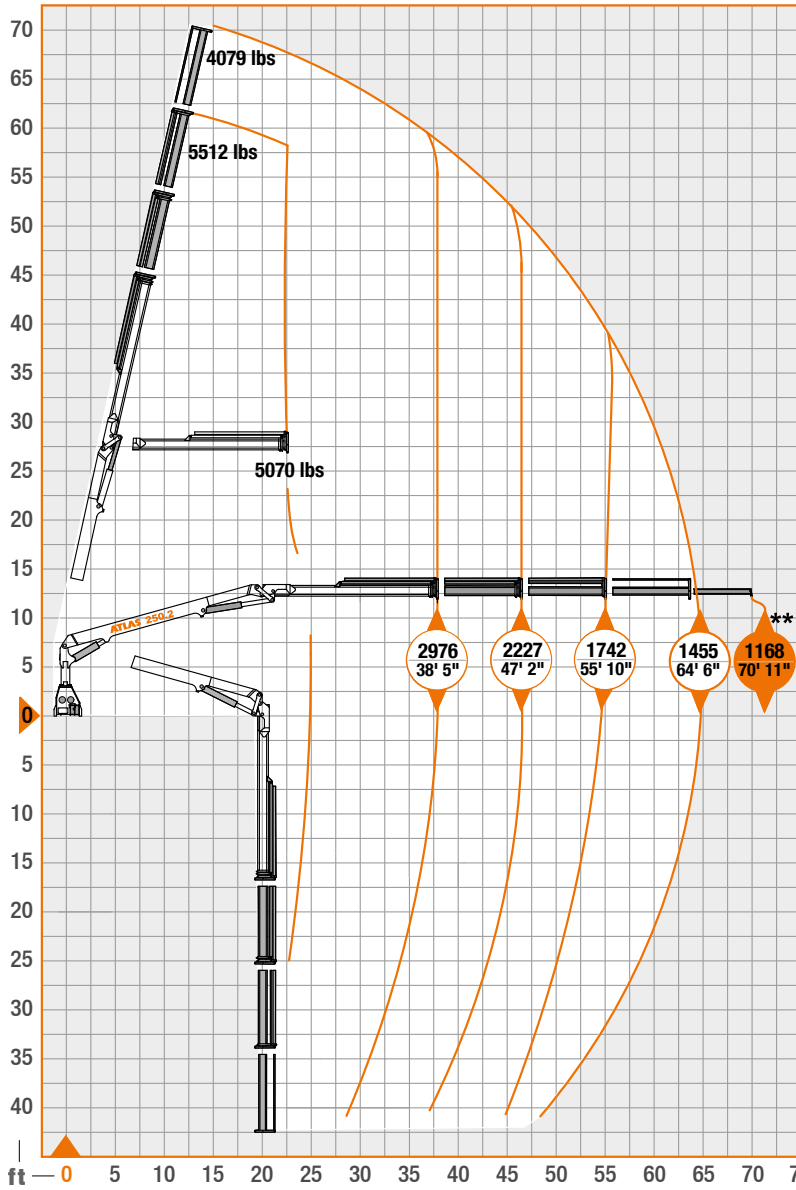
	12125	7893	6217	5093
lbs				
	13' 1"	22' 6"	28' 3"	33' 11"
ft-in				

AK 250.2V/CS A16

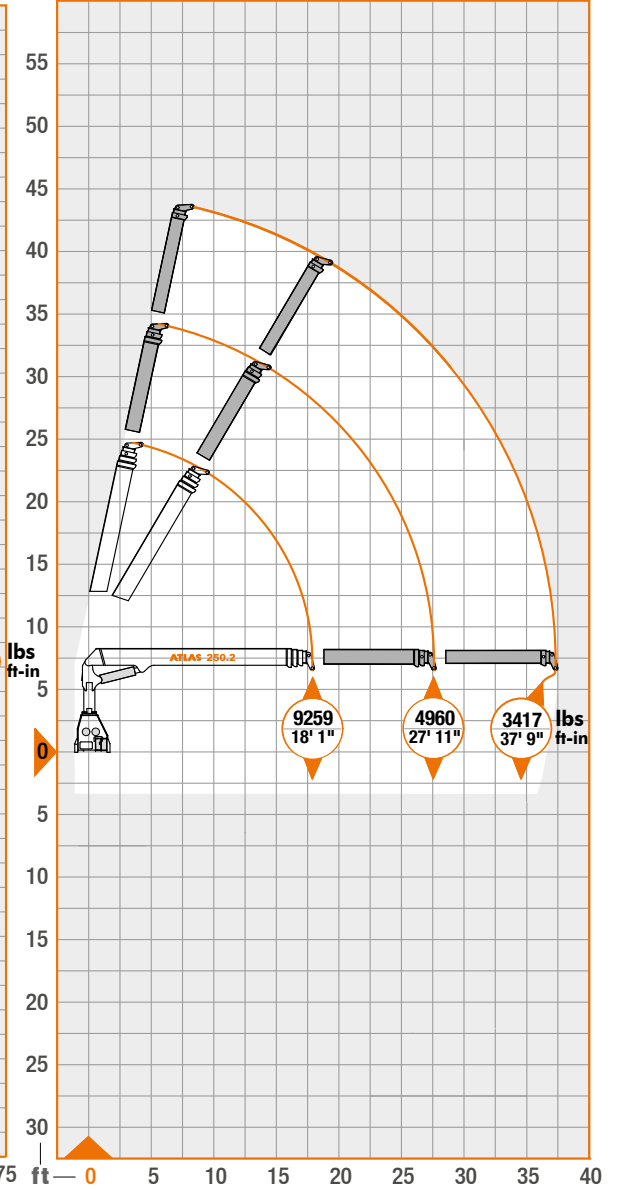
	6614	4277	3197	2513
lbs				
	21'	33' 4"	42' 1"	50' 9"
ft-in				

Load Diagrams

AK 250.2V/CS A21



AK 250.2T A27



** - Optional

Boom position 15°

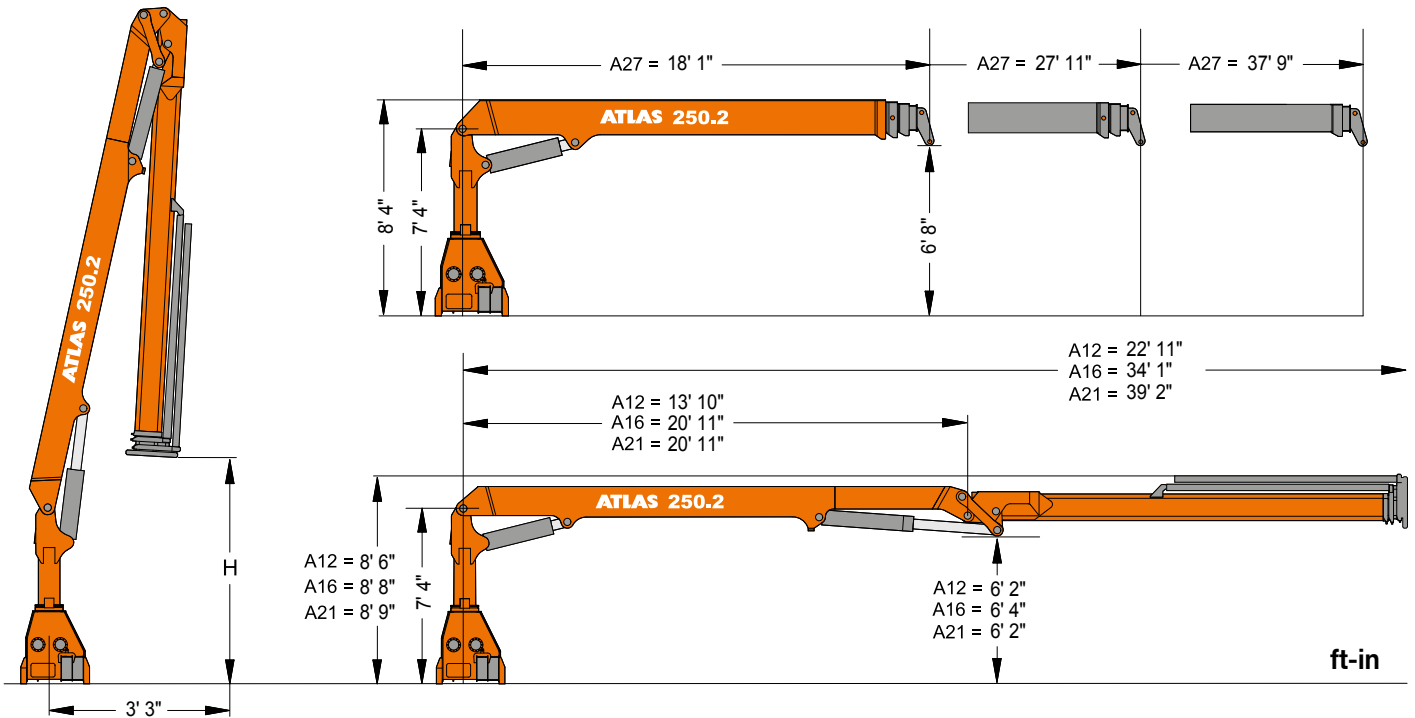
Lifting capacity in "lbs"
Measurement in "ft-in"

AK 250.2V/CS A21	
	2976 2227 1742 1455 1168
	38' 5" 47' 2" 55' 10" 64' 6" 70' 11"

AK 250.2T A27	
	9259 4960 3417
	18' 1" 27' 11" 37' 9"

AVAILABLE & COST EFFECTIVE

Dimensions



250.2V/VCS-T/TCS				H1/B3					
Type	Weight			H	Operating pressure	Oil supply amount	Swivel range	Swivel moment	Lifting moment
	lbs**	lbs***	lbs****	ft-in	PSI	US gal/min	°	US tonf ft	US tonf ft
A 12	5930	1058-1323	573	11' 10"	3626	13.2	410°	15.3	88.93
A 16	7076		573	14' 9"	3626	13.2	410°	15.3	71,58
A 21	7650		573	9' 6"	3626	13.2	410°	15.3	57,19
A 27	6570		573	10' 6"	3626	13.2	410°	15.3	83,39

- * = Data for the manuell extension
- ** = Simple basic unit for loadhook work
- *** = Depending on stabilizer
- **** = Oil tank with oil

CS - cranes:

- = Simple and strong !
- = Reduces lift on pure !
- = DIN 15018 specifically for the non-European market !
- = No additional equipment available!
- = Low maintenance !

Control options 250.2V/T

Radio remote control provides the operator with the highest degree of security when controlling the loading crane. In order to guarantee precise, efficient and rational work, the operator can choose from a large number of designs and models.

HBC - Radio remote controls



Spectrum 2 – with 3 cross levers*

ABITRON - Radio remote controls



Nova XL – with 3 cross levers

* Optionally also with lighting in the upper hoop guard

ATLAS - Radio remote controls



ATLAS J3 – with 3 cross levers



Seat on the column with a holder for radio remote control. Heatable shell seat upon request.

All kinds of wireless link control are also available with a linear lever and a display. See Radio control brochure.

AVAILABLE & COST EFFECTIVE

Control options



Standard, 2 side control 250.2V



250.2VCS



250VCS

GANDERKESEE FACTORY

Atlas GmbH
Atlasstraße 6
D-27777 Ganderkesee,
Germany

Tel.: +49 (0) 4222 954 0
Fax: +49 (0) 4222 954 220
E-mail: info@atlasgmbh.com
www.atlasgmbh.com



VECHTA FACTORY

Atlas GmbH
Theodor-Heuss-Str. 3
D-49377 Vechta
Germany

T: +49 (0) 4441 954 0
F: +49 (0) 4441 954 299
E-mail: info@atlasgmbh.com
www.atlasgmbh.com



DELMENHORST FACTORY

Atlas GmbH
Stedinger Straße 324
D-27751 Delmenhorst
Germany

T: +49 (0) 4221 49 10
F: +49 (0) 4221 49 14 43
E-mail: info@atlasgmbh.com
www.atlasgmbh.com

ATLAS CRANES UK LTD NATIONAL SALES & SERVICE FACILITY

Wharfedale Road,
Euroway Trading Est.
Bradford, England BD4 6SL
United Kingdom

T: +44 8444 99 66 88
F: +44 1274 65 37 85
E-mail: atlasuk@atlasgmbh.com
www.atlas-cranes.co.uk
www.atlasgmbh.com

ATLAS SINCE 1919 **AK 250.2V/VCS/-T/TCS**



www.atlasgmbh.com

ATLAS GmbH

CRANES

Atlasstraße 6

D-27777 Ganderkesee, Germany

Tel.: +49 (0) 4222 954 0

Fax: +49 (0) 4222 954 220

info@atlasgmbh.com