

ATLAS

SINCE 1919



LOADER CRANE AK 206.3E



MADE
IN
GERMANY

**ECONOMICAL,
FLEXIBLE,
STRONG**



max: 18298 lbs



max: 40.1 ft



max: 4496 psi

WWW.ATLASGMBH.COM



Our cranes are certified to
DIN EN ISO 9001 : 2008.



Brick Stack Grapples



Easily visible LED
operation status
indication.

Tools

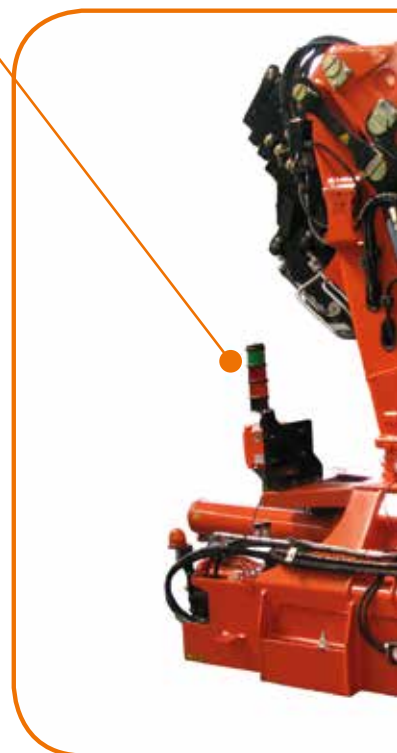
The appropriate tool for every
task: classic pallet forks or a
modern container discharging
system — we will provide you
with everything that you will
need for the optimal crane
operation.



Pallet Fork



Quickly mountable
grab head piece.



Grabber



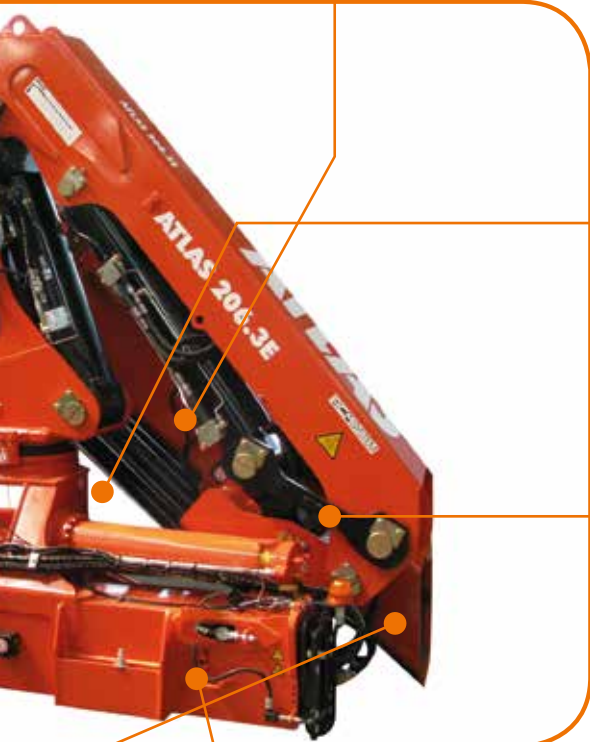
Orange Peel Grapple



Brightly illuminated LED headlight for high visibility in the working area.



The oil cooler with a thermal switch enables the long and continual work of the crane in cases of extreme and hard tasks.



The automatic central lubrication system guarantees lubrication process in regular intervals. Optionally as a semi- or a complete system. Easy to maintain and time-saving.



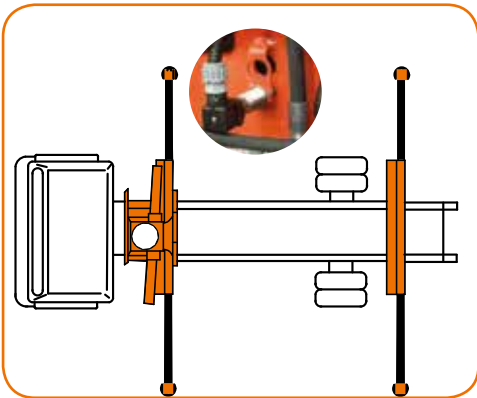
Easy operation of the safety hook for the lateral latching device of the outrigger support.

AVAILABLE & COST EFFECTIVE



Hose reel for good coils of hoses.

MONITORING OF THE STABILIZING SUPPORT



Electr. monitoring of the stabilizing support wide and the slewing range



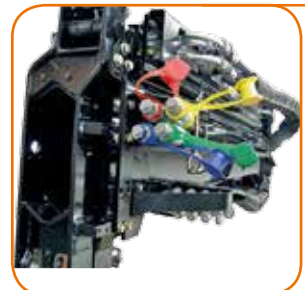
Internal hose routing, good protection for hoses.



Oil Tank



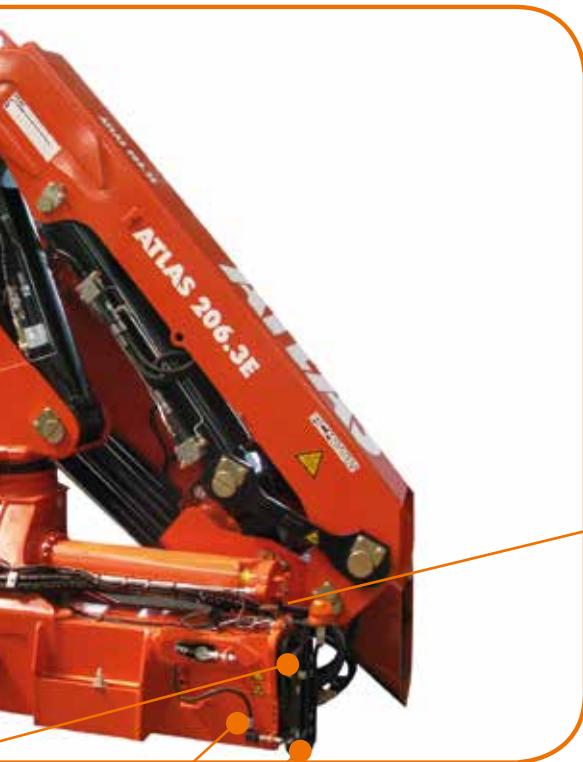
(EAW) in accordance with EN 12999



Quick-release couplings for quick tool changes.



SUPPORTING LEGS
 ATLAS proposes various design versions depending on the requirements for support in the relevant situation. The ATLAS typical square outriggers guarantee the highest level of stability.



LED light strips on the supporting leg for increased safety.



Support leg automatically slewed through rack and pinion.

Additional outriggers with various support distances and support force for maximum stability. The additional outriggers of the cranes of our E-crane series can be controlled also via a wireless link.

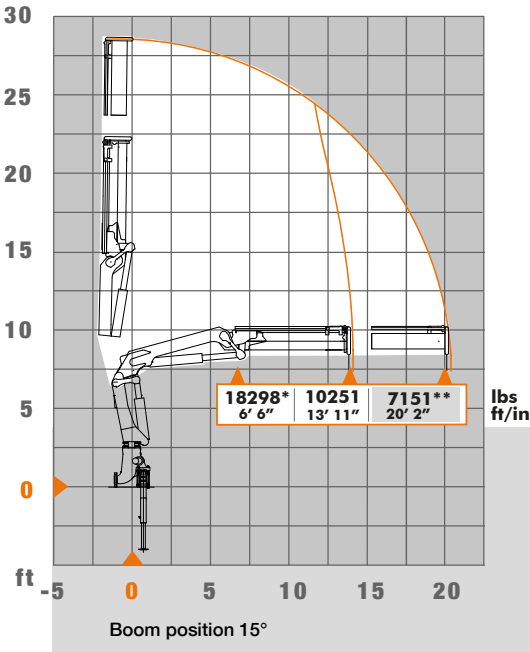


Screw-on square supporting leg.



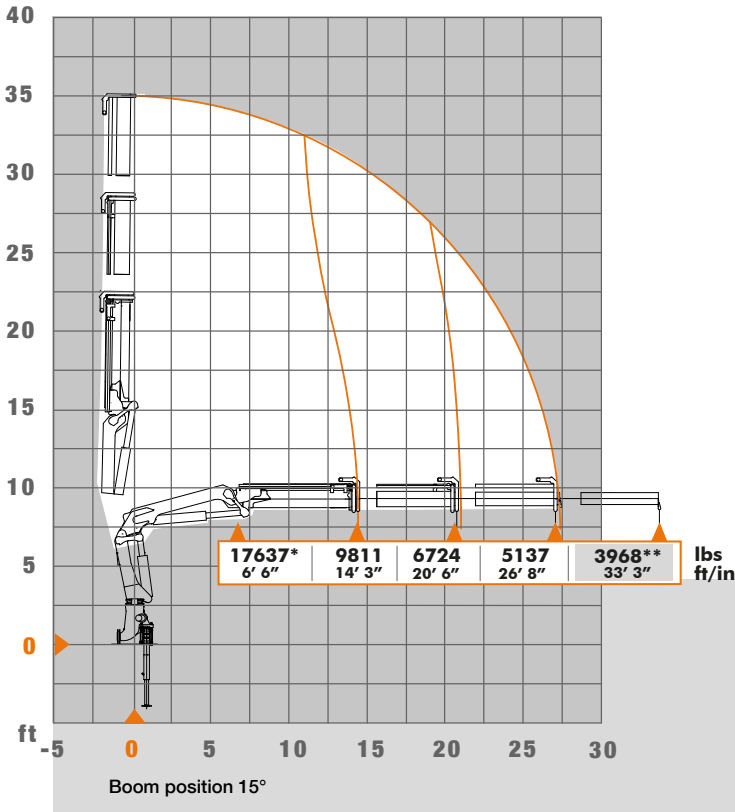
AVAILABLE & COST EFFECTIVE

Load Diagrams



AK 206.3E
A1-20.3/1

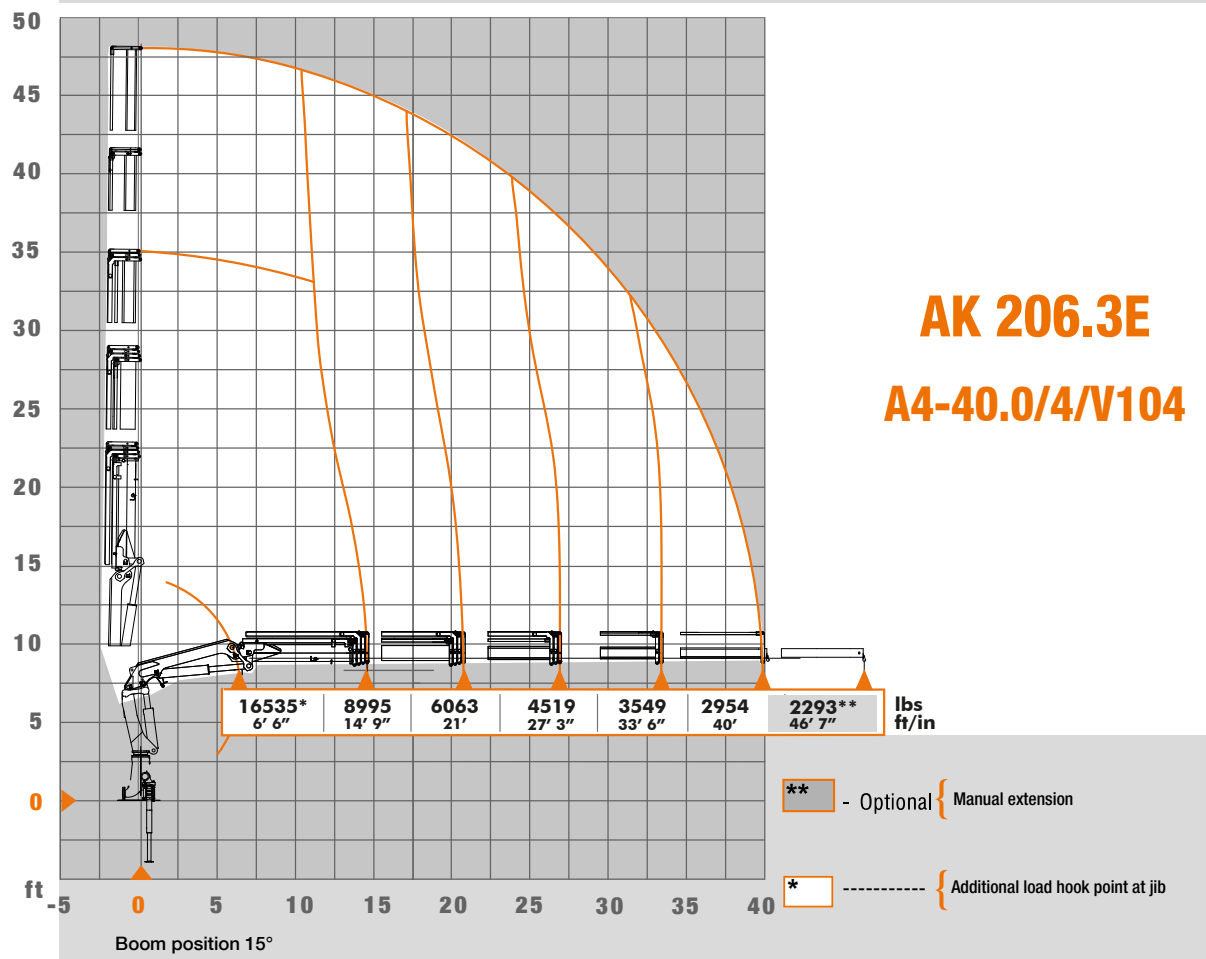
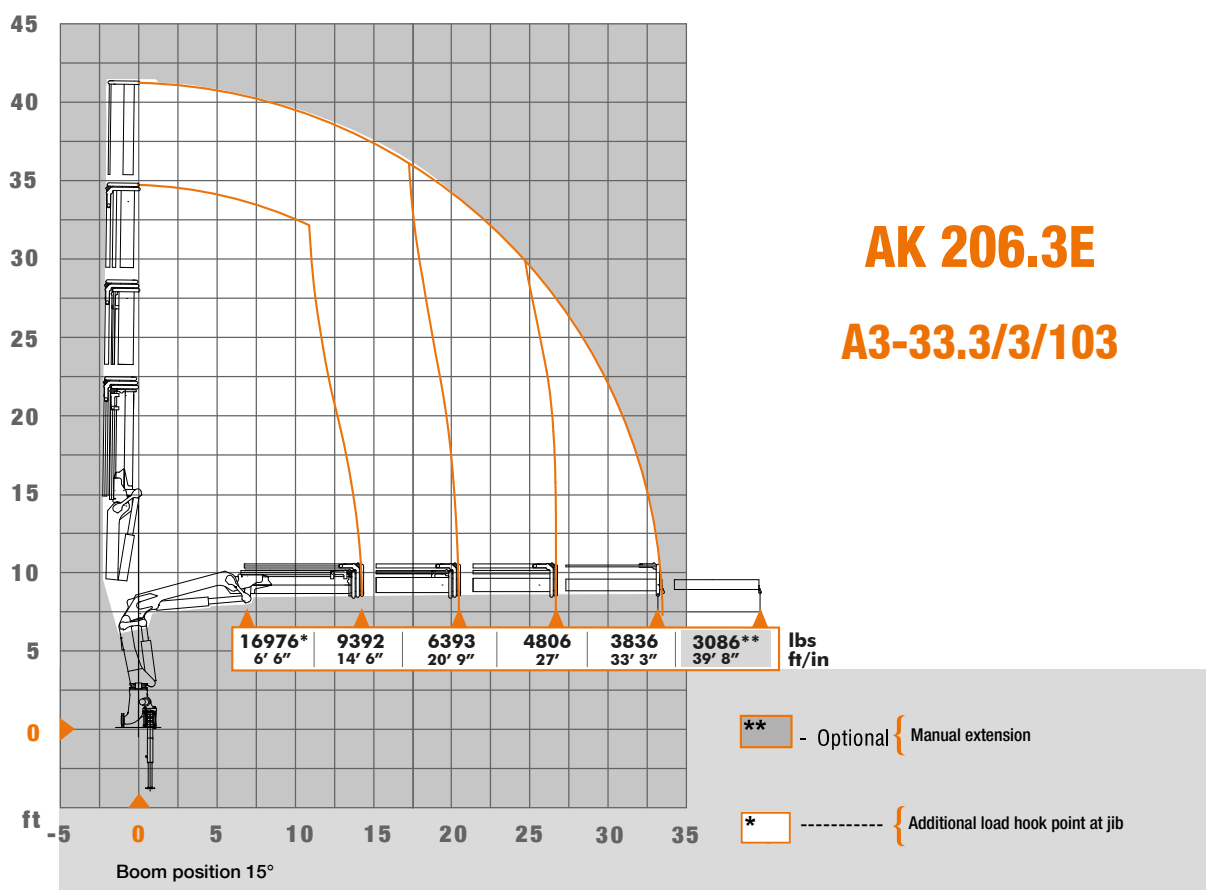
** - Optional { Manual extension
* ----- { Additional load hook point at jib



AK 206.3E
A2-26.8/2/V102

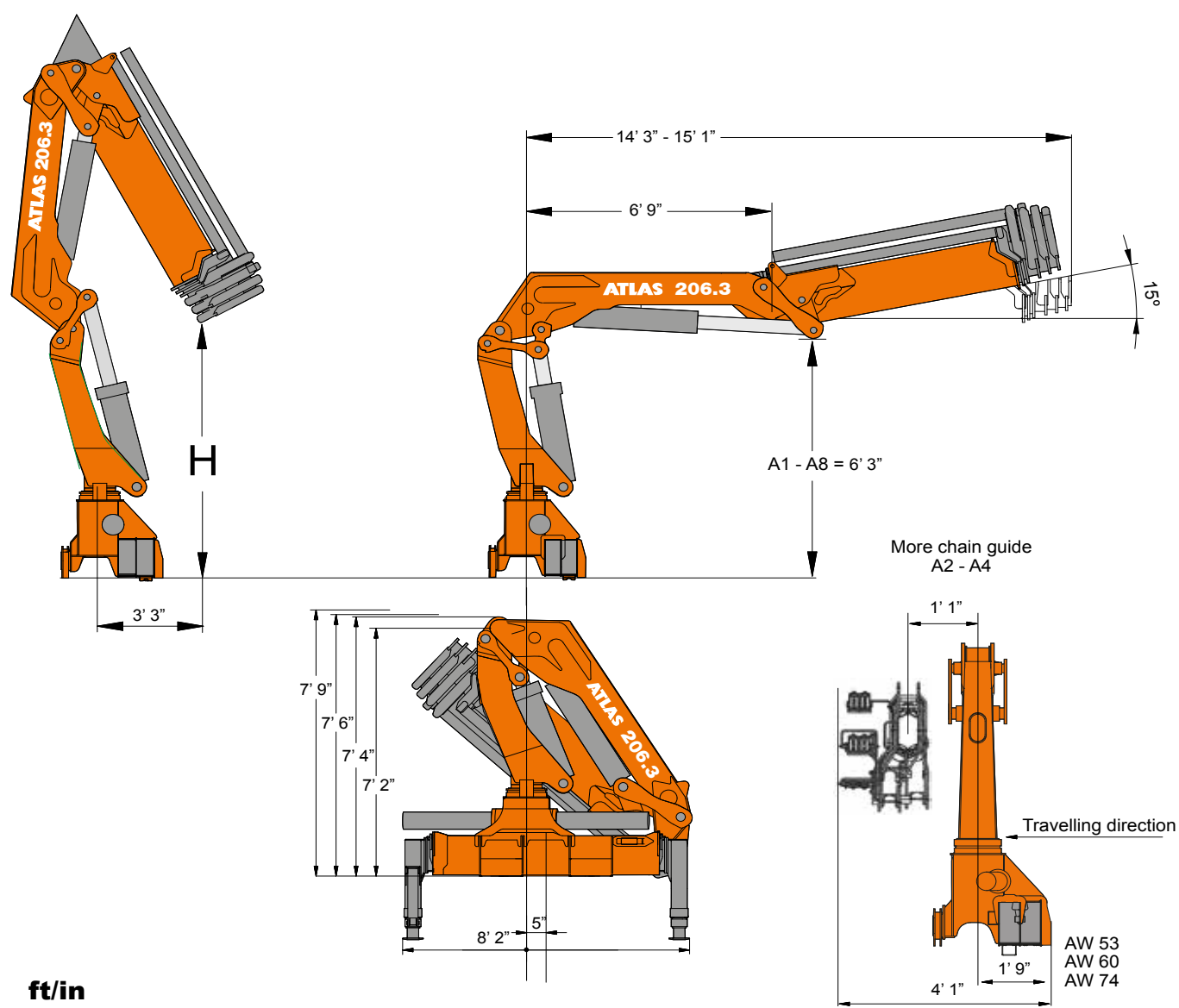
** - Optional { Manual extension
* ----- { Additional load hook point at jib

Load Diagrams










AVAILABLE & COST EFFECTIVE

Dimensions



ft/in

AK 206.3E		HC1-HD4					
	Weight without stabilizer extensions and stabilizer legs	H	Operating pressure	Oil supply amount	Swivel range	Swivel moment	Lifting moment
							
Type	lbs	ft/in	psi	gal/min		tonf ft	tonf ft
A1	4685	8'					71.7
A2	5049	7' 10"	4496	11.9	410°	9	69.9
A3	5390	7' 7"					68.3
A4	5677	7' 5"					66.6



Simple basic unit for loadhook work

Control options

Radio remote control provides the operator with the highest degree of security when controlling the loading crane. In order to guarantee precise, efficient and rational work, the operator can choose from a large number of designs and models.

HBC – Radio remote controls



Spectrum 2 – with 3 cross levers

ABITRON – Radio remote controls



Nova XL – with 3 cross levers

All kinds of wireless link control are also available with a linear lever and a display. See Radio control brochure.

AVAILABLE & COST EFFECTIVE

Control options

Radio remote control provides the operator with the highest degree of security when controlling the loading crane. In order to guarantee precise, efficient and rational work, the operator can choose from a large number of designs and models.

ATLAS – Radio remote controls



ATLAS J3 – with 3 cross levers



Seat on the column with a holder for radio remote control. Heatable shell seat upon request.



EL – HMS Hand lever control, optional

All kinds of wireless link control are also available with a linear lever and a display. See Radio control brochure.

GANDERKESEE FACTORY

Atlas GmbH
Atlasstraße 6
D-27777 Ganderkesee,
Germany

Tel.: +49 (0) 4222 954 0
Fax: +49 (0) 4222 954 220
E-mail: info@atlasgmbh.com
www.atlasgmbh.com



VECHTA FACTORY

Atlas GmbH
Theodor-Heuss-Str. 3
D-49377 Vechta
Germany

T: +49 (0) 4441 954 0
F: +49 (0) 4441 954 299
E-mail: info@atlasgmbh.com
www.atlasgmbh.com



DELMENHORST FACTORY

Atlas GmbH
Stedinger Straße 324
D-27751 Delmenhorst
Germany

T: +49 (0) 4221 49 10
F: +49 (0) 4221 49 14 43
E-mail: info@atlasgmbh.com
www.atlasgmbh.com

ATLAS CRANES UK LTD NATIONAL SALES & SERVICE FACILITY

Wharfedale Road,
Euroway Trading Est.
Bradford, England BD4 6SL
United Kingdom

T: +44 8444 99 66 88
F: +44 1274 65 37 85
E-mail: atlasuk@atlasgmbh.com
www.atlas-cranes.co.uk
www.atlasgmbh.com



ATLAS SINCE 1919 **AK 206.3E**



www.atlasgmbh.com

ATLAS GmbH

CRANES

Atlasstraße 6

D-27777 Ganderkesee, Germany

T: +49 (0) 4222 954 0

Fax: +49 (0) 4222 954 220

info@atlasgmbh.com